

BLACKOUT 100%

FLOCKÉ 11201



COLLECTION
2018
2021

INTELLIGENT FABRICS FOR SOLAR PROTECTION



INTERNAL
APPLICATION

FLOCKÉ 11201

ELEGANCE IN TERMS OF COMPLETE BLACKOUT

100%

BLACKOUT
AND HEAT PROTECTION

GLASS
FABRIC,
PVC AND POLYESTER FREE

- **100% OF THE LIGHT AND UV RAYS BLOCKED** at 100.000 lux
- **THERMAL COMFORT:** rejects up to **89% OF SOLAR RADIATION** thanks to its special white acrylic coating facing the window (g_{tot} = 0,11 / glazing g = 0,32 and U = 1,1 W/m²K)
- Stylish fabric, 9 trendy colours
- **WIDE WIDTH OF 240 CM** for large-sized windows offering a seamless design
- **DIMENSIONAL STABILITY, DURABILITY** (test of 10.000 cycles, class 3 NF EN 13120) **MECHANICAL RESISTANCE:** perfect flatness even in large dimensions
- **Health/Safety:** conforms to standard requirements for buildings open to the public

TECHNICAL DATA

FLOCKÉ 11201			
Composition	PVC-free treated flocked fibreglass fabric		
Fire, smoke classification and other official test reports*	M1 (F) - NFP 92 503 B1 (DE) - DIN 4102-1 BS (GB) - 476 Pt 6 & 7 Class 0 IMO - MED 2014/90/EU	FR (US) - NFPA 701 F2 (F) - NF F 16-101 HHV: 9,7 MJ/kg (4,02 to 5,33 MJ/m ²)	
Health, safety	Antibacterial: More than 99% of bacteria destroyed - ASTM E 2180		
Opacity	100 % to 100.000 lux		
UV screen	100 %		
Width	240 cm		
Weight/m²***	415 to 550 g ± 10 % (depending on colours) - ISO 2286 - 2		
Thickness***	0,45 to 0,52 mm ± 10 % (depending on colours) - ISO 2286 - 3		
Colour Fastness to light (scale of 8)	7/8 - ISO 105 B02 (white not graded)		
Mechanical resistance	Breaking	Tear	Folding
Warp	> 120 daN/5 cm	≥ 6 daN	≥ 10 daN/5 cm
Weft	> 70 daN/5 cm	≥ 5 daN	≥ 10 daN/5 cm
	ISO 1421	EN 1875-3	ISO 1421**
Elongation (warp and weft)	< 5 % - ISO 1421		
Packaging	Rolls of 33 lm		
Making up	Advice note on request		

This product's technical data are in conformity with this brochure as of the date of publication. MERMET SAS reserves the right to change the technical data; only those provided on the company's website www.sunscreen-mermet.com shall be deemed to be authentic. Where applicable, MERMET SAS also reserves the right to withdraw this product from sale should any of the technical properties or characteristics set out above prove to be inadequate or rendered impossible as a result of a change in regulations or in knowledge or understanding.

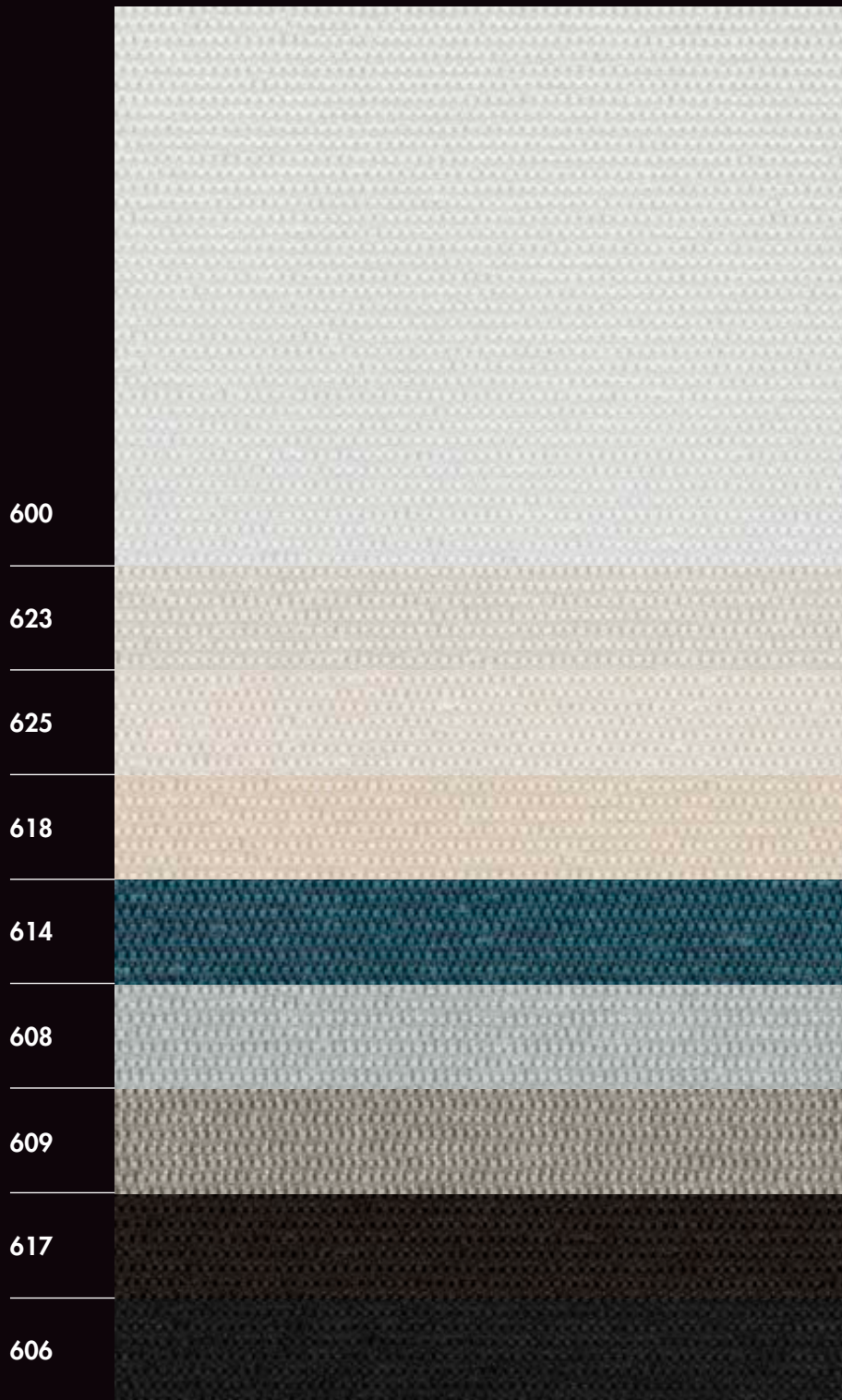
* Reports available on request, please contact Mermet

** Internal procedure derived from ISO 1421 standard

*** Colours 600-618-608-609-623-625 = weight /m²: 550 g (± 10 %) & thickness: 0,52 mm (± 10 %)

Colours 606-614-617 = weight /m²: 415 g (± 10 %) & thickness: 0,45 mm (± 10 %)

WIDTH: 240 CM

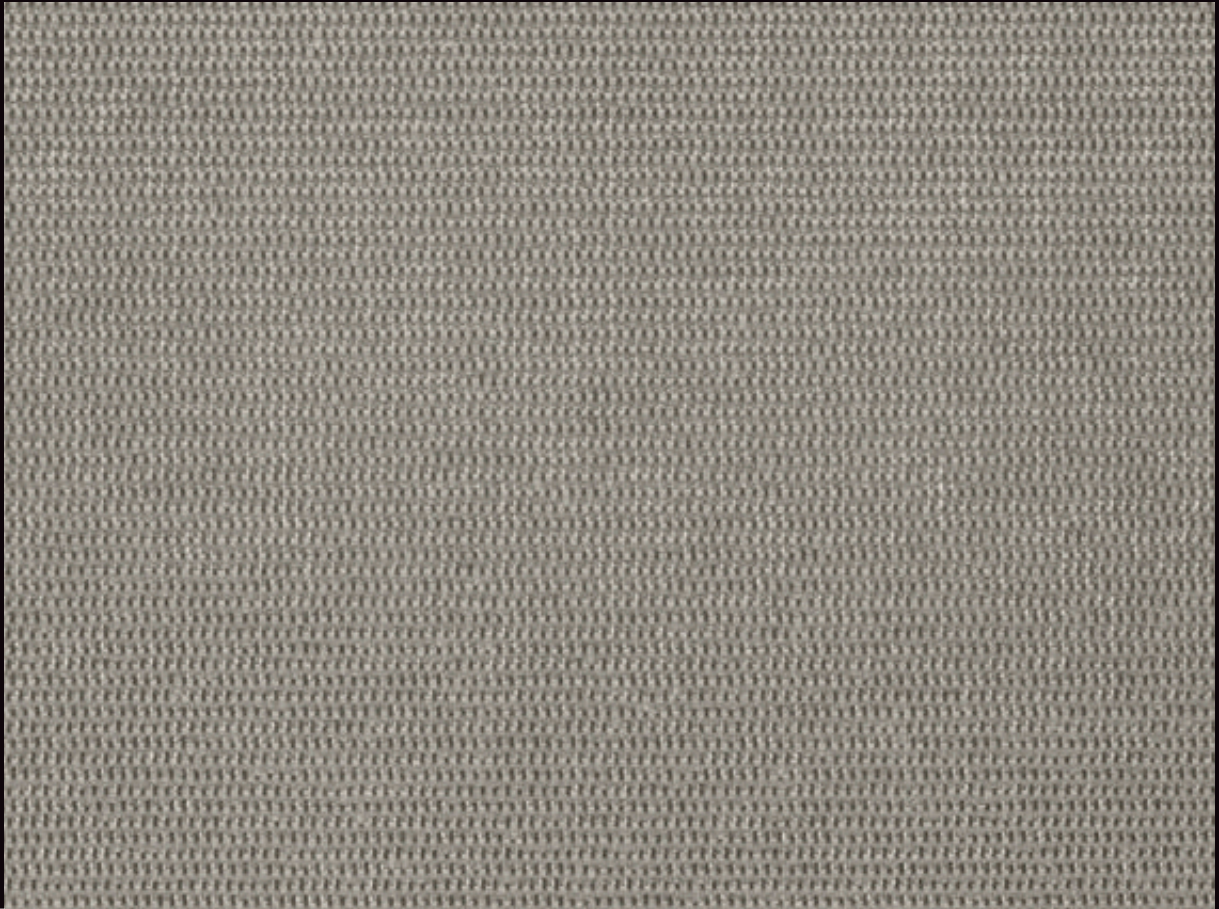


Colours may be slightly different from the actual ones

SERVICE +

- Calculation of solar factor g_{tot} (glazing + blind)
- Spectral values and thermal & optical factors available on request
- Specification sheet
- A4 samples and prototypes
- Training on fabrics functionality

609



THERMAL AND OPTICAL FACTORS in the European standard EN 14501

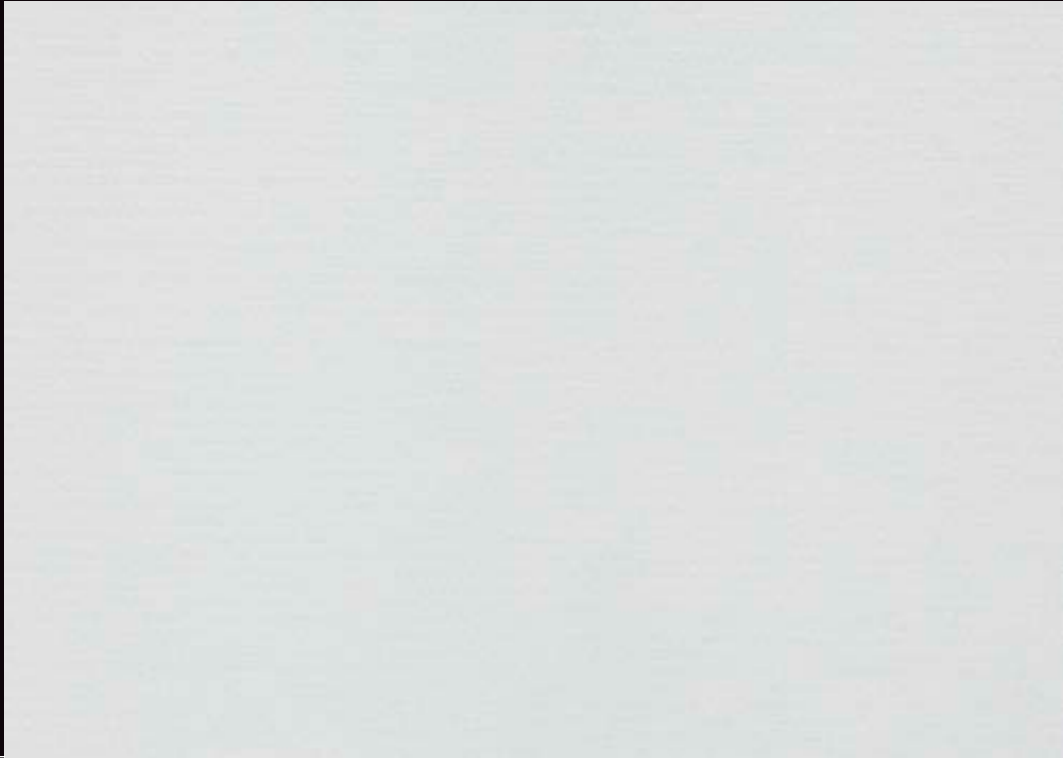
FLOCKÉ 11201 OF 0%	Thermal factors					Optical factors
	Fabric			Fabric + Glazing / gtot internal blind		Tv
Colours	Ts	Rs	As	C : gv = 0,59	D : gv = 0,32	
White acrylic backing side	0	70	30	0,26 2	0,11 3	0
600 White	0	73	27	0,27 2	0,12 3	0
625 Coraline	0	74	26	0,27 2	0,12 3	0
623 Sahel	0	69	31	0,29 2	0,15 2	0
618 Mississippi	0	63	37	0,32 2	0,16 2	0
608 Chartreux	0	46	54	0,40 1	0,22 2	0
609 Loutre	0	25	75	0,40 1	0,27 2	0
614 Pétrole	0	17	83	0,52 0	0,29 2	0
617 Chêne	0	4	96	0,56 0	0,31 2	0
606 Black	0	4	96	0,56 0	0,31 2	0

gv = 0,59: Solar factor of standard glazing (C), low-emission 4/16/4 double glazing filled with Argon (U value thermal transmittance = 1,2 W/m²K).

gv = 0,32: Solar factor of standard glazing (D), reflecting low-emission 4/16/4 double glazing filled with Argon (U value thermal transmittance = 1,1 W/m²K).

Comfort classification according to EN 14501 standard: **0** very little effect **1** little effect **2** moderate effect **3** good effect **4** very good effect

Samples tested according to EN 14500 standard defining the measurements and calculation methods as specified in the standard EN 13363-2 "Solar protection devices combined with glazing calculation of solar and light transmittance - part 2: EN 13363-2 detailed method" and EN 410 "Glass in building - Determination of luminous and solar characteristics of glazing".



INTERNAL APPLICATIONS



Roller blinds



Roman shades



Decorative panels



Vertical blinds



Velums



ZIP Roller blinds



Printable



Space fitting



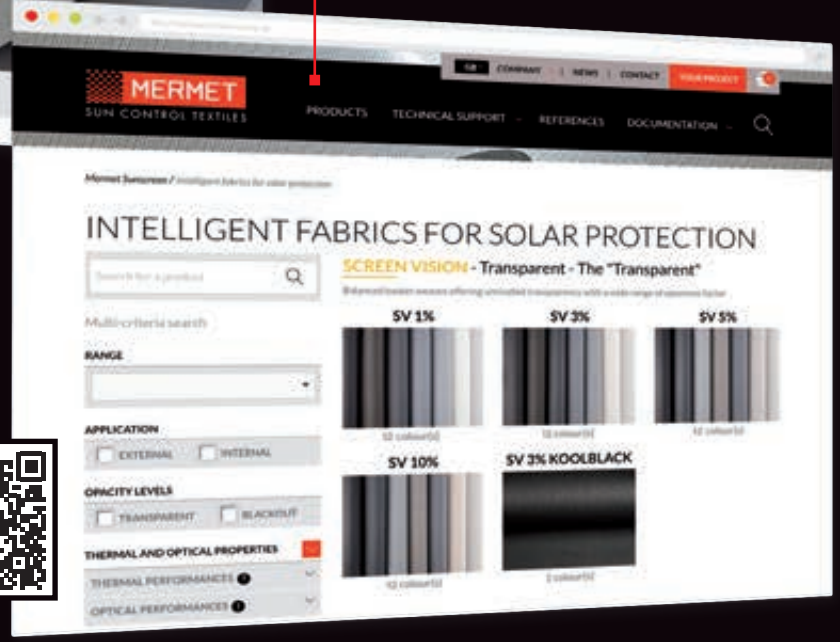
www.sunscreen-mermet.com



FIND IN 3 CLICKS
THE FABRIC BEST SUITED
 to your project

- A search engine with performances criteria
- Many documents for download
- All products information available
- A library of references

Go directly to the products catalog >



 **MERMET COLLECTION** offers a **wide choice of fabrics** for external and internal application, from transparency to total darkness, for thermal and optical comfort. To receive other brochures from the collection, **contact us**.



SCREEN VISION / DESIGN / THERMIC / LOW E

EXTERNAL SCREEN CLASSIC

SCREEN NATURE

BLACKOUT 100 %

ACOUSTICS



58, chemin du Mont Maurin - 38630 Les Avenières Veyrins-Thuellin - France
 Tel. +33(0) 474 336 615 - Fax +33(0) 474 339 729

This brochure must be read and interpreted in accordance with the General Terms & Conditions of Sale of MERMET SAS, with which it forms an indissoluble whole. The General Terms & Conditions of Sale that are current at any time are those contained on the MERMET SAS website at the following address: www.sunscreen-mermet.com.