

BLACKOUT 100%

KIBO 8500

KIBO 8500

BLACKOUT 100%



COLLECTION
2018
2021

INTELLIGENT FABRICS FOR SOLAR PROTECTION



INTERNAL
APPLICATION

KIBO 8500

THE BLACKOUT FABRIC COORDINATED WITH INTERNAL SCREENS

100% BLACKOUT AND HEAT PROTECTION SCREEN LOOK

- First-class solution, **100% OF THE LIGHT AND UV RAYS BLOCKED** at 100.000 lux
- **THERMAL COMFORT:** thanks to its white acrylic backing facing the window, **UP TO 89% OF SOLAR RADIATION IS ELIMINATED** (g_{tot} = 0,11 / glazing g = 0,32 and U = 1,1)
- 8 colours from the M-Screen 8505 colour range
- **WIDE WIDTH OF 250 CM** for large-sized windows offering a seamless design
- High **MECHANICAL RESISTANCE** and good **DIMENSIONAL STABILITY** for high roller blinds
- Health/Safety: conforms to standard requirements for buildings open to the public

TECHNICAL DATA

KIBO 8500			
Composition	Coated fibreglass yarns flocked fabric		
Fire, smoke classification and other official test reports [†]	M1 (F) - NFP 92 503 IMO - MED 2014/90/EU HHV: 15,3 MJ/kg (9,03 to 9,94 MJ/m ²)		
Health, safety	Greenguard® GOLD: Guarantee of indoor air quality (VOC) Antibacterial: More than 99% of bacteria destroyed - ASTM E 2180		
Opacity	100% at 100.000 lux (500 W)		
UV screen	100%		
Width	250 cm		
Weight/m ² ***	590 to 650 g ± 10% (depending on colours) - ISO 2286 - 2		
Thickness***	0,50 to 0,55 mm ± 10% (depending on colours) - ISO 2286 - 3		
Colour Fastness to light (scale of 8)	7/8 - ISO 105 B02 (white not graded)		
Mechanical resistance	Breaking	Tear	Folding
Warp	> 135 daN/5 cm	≥ 4 daN	≥ 40 daN/5 cm
Weft	> 140 daN/5 cm	≥ 4 daN	≥ 60 daN/5 cm
	ISO 1421	EN 1875-3	ISO 1421**
Elongation (warp and weft)	< 5% - ISO 1421		
Packaging	Rolls of 33 lm		
Making up	Advice note on request		

This product's technical data are in conformity with this brochure as of the date of publication. MERMET SAS reserves the right to change the technical data; only those provided on the company's website www.sunscreen-mermet.com shall be deemed to be authentic. Where applicable, MERMET SAS also reserves the right to withdraw this product from sale should any of the technical properties or characteristics set out above prove to be inadequate or rendered impossible as a result of a change in regulations or in knowledge or understanding.

* Reports available on request, please contact Mermet

** Internal procedure derived from ISO 1421 standard

*** Colours 0202-0220-0207-0707-0101 = weight/m²: 650 g (± 10%) & thickness: 0,55 mm (± 10%)

Colours 3010-3006-3030 = weight/m²: 590 g (± 10%) & thickness: 0,50 mm (± 10%)

WIDTH: 250 CM

0202

0220

0207

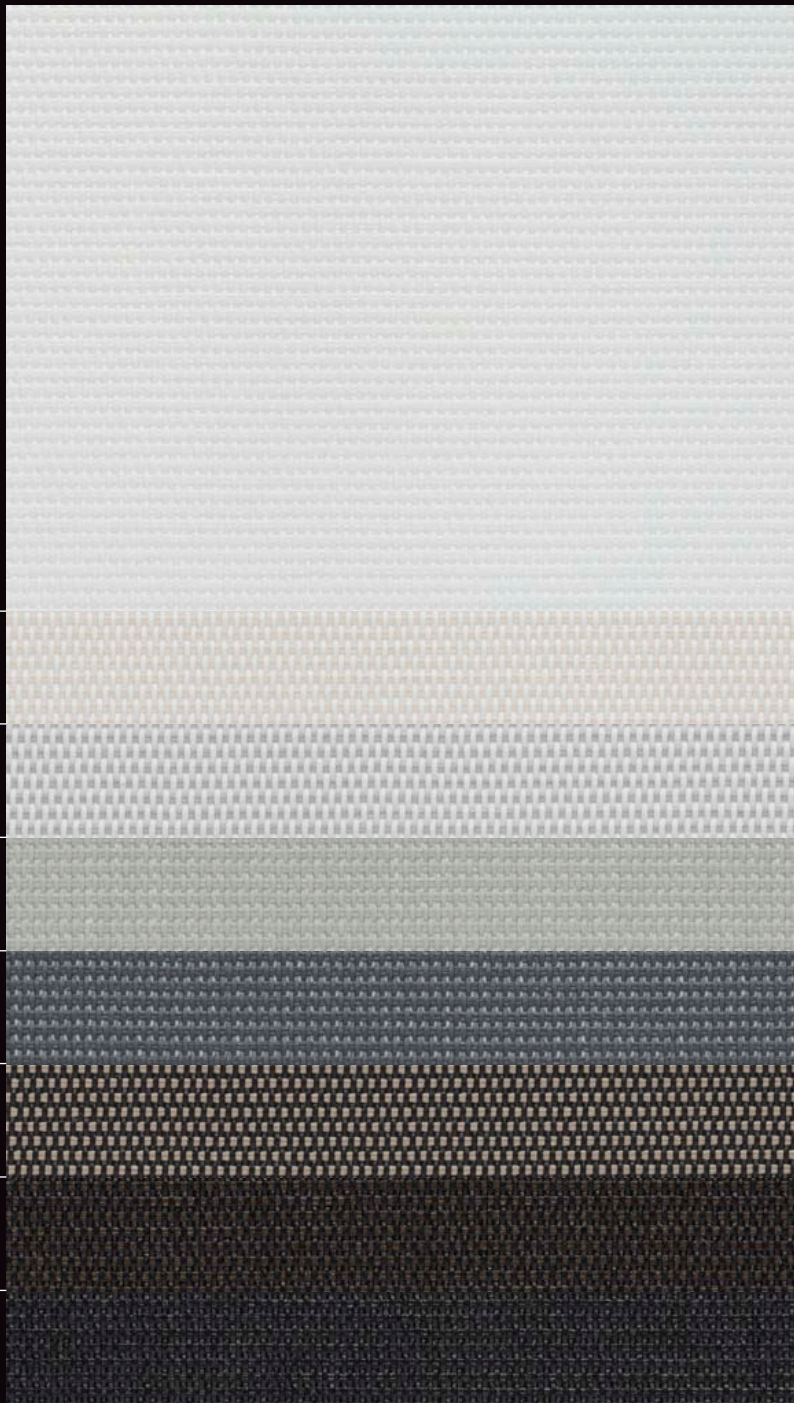
0707

0101

3010

3006

3030

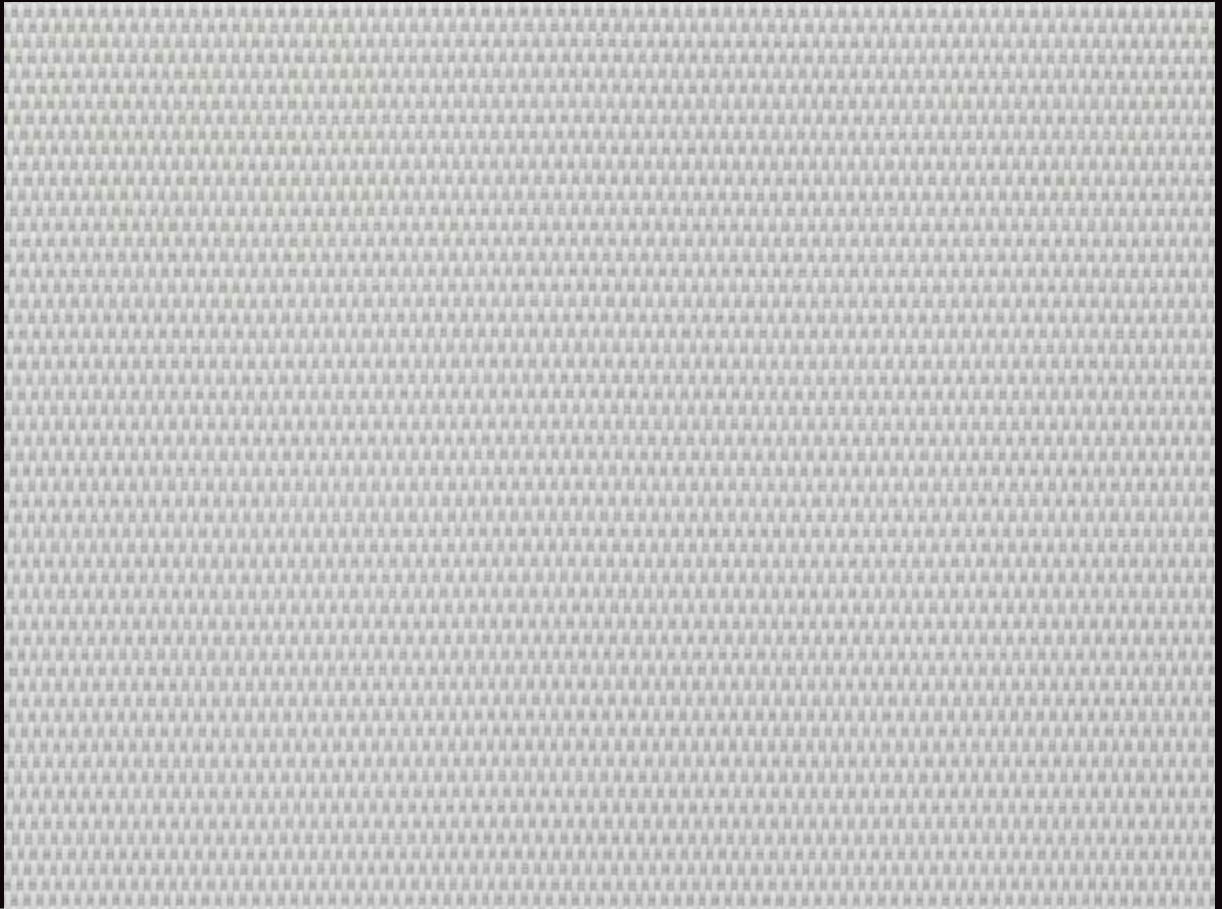


Colours may be slightly different from the actual ones

SERVICE 

- Calculation of solar factor g_{tot} (glazing + blind)
- Spectral values and thermal & optical factors available on request
- Specification sheet
- A4 samples and prototypes
- Training on fabrics functionality

0207



THERMAL AND OPTICAL FACTORS in the European standard EN 14501

KIBO 8500 OF 0%	Thermal factors					Optical factors
	Fabric			Fabric + Glazing / gtot internal blind		Tv
Colours	Ts	Rs	As	C : gv = 0,59	D : gv = 0,32	
White acrylic backing side	0	64	36	0,30 ②	0,14 ③	0
0202 White	0	74	26	0,25 ②	0,11 ③	0
0220 White Linen	0	67	33	0,29 ②	0,14 ③	0
0207 White Pearl	0	58	42	0,33 ②	0,16 ②	0
0707 Pearl	0	40	60	0,41 ①	0,15 ②	0
0101 Grey	0	23	77	0,49 ①	0,28 ②	0
3010 Charcoal Sable	0	13	87	0,53 ①	0,29 ②	0
3006 Charcoal Bronze	0	6	94	0,55 ①	0,31 ②	0
3030 Charcoal	0	5	95	0,55 ①	0,31 ②	0

gv = 0,59: Solar factor of standard glazing (C), low-emission 4/16/4 double glazing filled with Argon (U value thermal transmittance = 1,2 W/m²K).
 gv = 0,32: Solar factor of standard glazing (D), reflecting low-emission 4/16/4 double glazing filled with Argon (U value thermal transmittance = 1,1 W/m²K).
 Comfort classification according to EN 14501 standard: ① very little effect ② little effect ③ moderate effect ④ good effect ⑤ very good effect

Samples tested according to EN 14500 standard defining the measurements and calculation methods as specified in the standard EN 13363-2 "Solar protection devices combined with glazing calculation of solar and light transmittance - part 2: EN 13363-2 detailed method" and EN 410 "Glass in building - Determination of luminous and solar characteristics of glazing".

0207



INTERNAL APPLICATIONS



Roller blinds



Roman shades



Decorative panels



Velums



ZIP Roller blinds



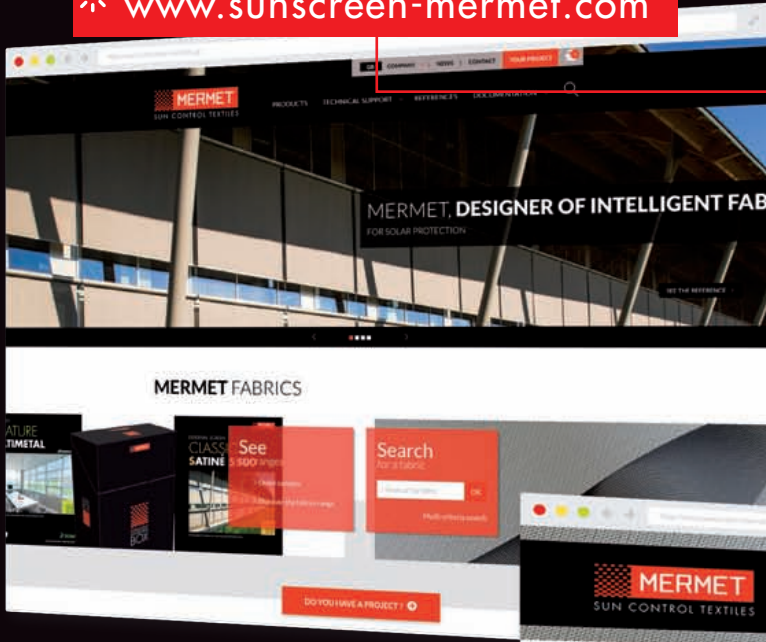
Printable



Space fitting



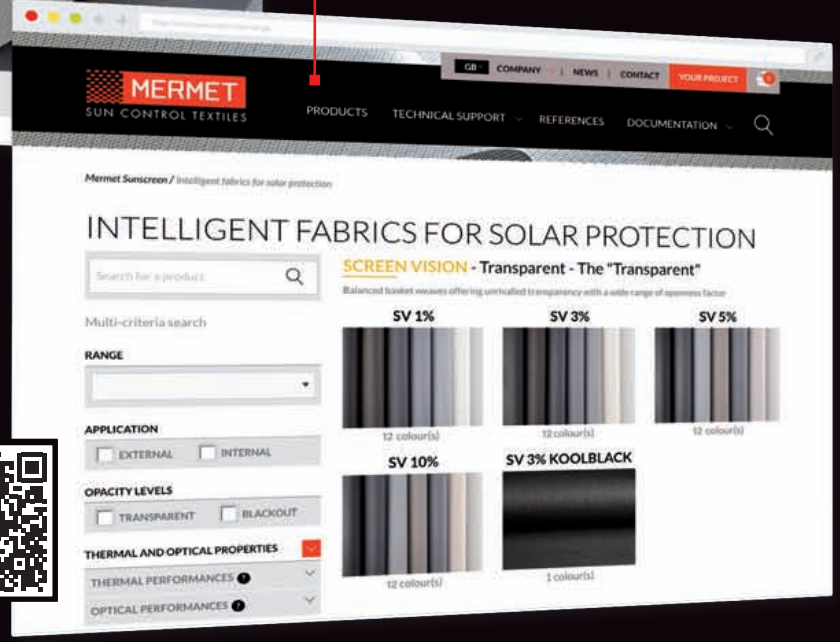
www.sunscreen-mermet.com



**FIND IN 3 CLICKS
THE FABRIC BEST SUITED**
to your project

- A search engine with performances criteria
- Many documents for download
- All products information available
- A library of references

Go directly to the products catalog >



MERMET COLLECTION offers a wide choice of fabrics for external and internal application, from transparency to total darkness, for thermal and optical comfort. To receive other brochures from the collection, **contact us.**



58, chemin du Mont Maurin - 38630 Les Avenières Veyrins-Thuellin - France
Tel. +33(0) 474 336 615 - Fax +33(0) 474 339 729

This brochure must be read and interpreted in accordance with the General Terms & Conditions of Sale of MERMET SAS, with which it forms an indissoluble whole. The General Terms & Conditions of Sale that are current at any time are those contained on the MERMET SAS website at the following address: www.sunscreen-mermet.com.

permatco + caractes VI-02/2018 © : Musée de l'Ordre de la Libération - Francifix - Soristes de France - SFP - Agence Benjamin Meuron - Philippe Matfre Architects - Luc Boagly - Mermet SAS