

EXTERNAL SCREEN CLASSIC

5500 MÉTAL

5500 MÉTAL

EXTERNAL SCREEN CLASSIC



COLLECTION
2018
2021

INTELLIGENT FABRICS FOR SOLAR PROTECTION



EXTERNAL AND
INTERNAL APPLICATION

5500 MÉTAL

THE FIRST **METALISED SCREEN** FABRIC FOR EXTERNAL AND INTERNAL APPLICATION

MAXIMUM **HEAT PROTECTION** AND VISUAL COMFORT

285 CM
LARGE WIDTH

- **EXCELLENT HEAT PROTECTION:** up to **98% OF SOLAR RADIATION REFLECTED** by external blinds ($g_{tot} = 0,02$ / glazing $g = 0,32$ and $U = 1,1$), comfort classification 4 (very good effect) according to EN 14501 standard
- **EXCELLENT GLARE CONTROL:** up to **97% OF LIGHT RAYS FILTERED** ($T_v = 3\%$), comfort classification 3 (good effect) according to EN 14501 standard
- **CONSISTENT AESTHETIC:** coordinates with the **BUILDING FACADE** thanks to the perfect integration of the metallic side with the building construction
- **VERY GOOD TRANSPARENCY** for excellent vision to the outside
- Perfect match with side channels systems such as **ZIP**
- **WEATHER-RESISTANT** and UV fading resistant
- **DIMENSIONAL STABILITY, DURABILITY** (test of 10.000 cycles, class 3 NF EN 13561), **MECHANICAL RESISTANCE:** perfect flatness even in large dimensions
- Health & Safety: conforms to standard requirements for buildings open to the public

TECHNICAL DATA

5500 MÉTAL			
Composition	42% Fibreglass - 58% PVC		
Fire, smoke classification and other official test reports*	M1 (F) - NFP 92 503 B1 (DE) - DIN 4102-1 Euroclass C-s3-d0 (EU) - EN 13501-1 mounted according to EN 13823 & EN 14716	BS (GB) - 476 Pt 6 & 7 Class 0 FR (US) - NFPA 701 HHV: 13,3 MJ/kg (6,92 MJ/m ²) C UNO (IT) - UNI 9177	
Health, safety	Greenguard® GOLD: Guarantee of indoor air quality (VOC) Antibacterial: More than 99% of bacteria destroyed - ASTM E 2180		
Openness factor	2%		
UV screen	Up to 99%		
Width	285 cm		
Weight/m ²	520 g ± 5% - ISO 2286 - 2		
Thickness	0,70 mm ± 5% - ISO 2286 - 3		
Colour Fastness to light (scale of 8)	7/8 - ISO 105 B02 (white not graded)		
Mechanical resistance	Breaking	Tear	Folding
Warp	> 200 daN/5 cm	≥ 10 daN	≥ 70 daN/5 cm
Weft	> 170 daN/5 cm	≥ 8 daN	≥ 70 daN/5 cm
	ISO 1421	EN 1875-3	ISO 1421**
Elongation (warp and weft)	< 5% - ISO 1421		
Packaging	Rolls of 33 lm		
Making up	Advice note on request		

This product's technical data are in conformity with this brochure as of the date of publication. MERMET SAS reserves the right to change the technical data; only those provided on the company's website www.sunscreen-mermet.com shall be deemed to be authentic. Where applicable, MERMET SAS also reserves the right to withdraw this product from sale should any of the technical properties or characteristics set out above prove to be inadequate or rendered impossible as a result of a change in regulations or in knowledge or understanding.

* Reports available on request, please contact Mermet

** Internal procedure derived from ISO 1421 standard

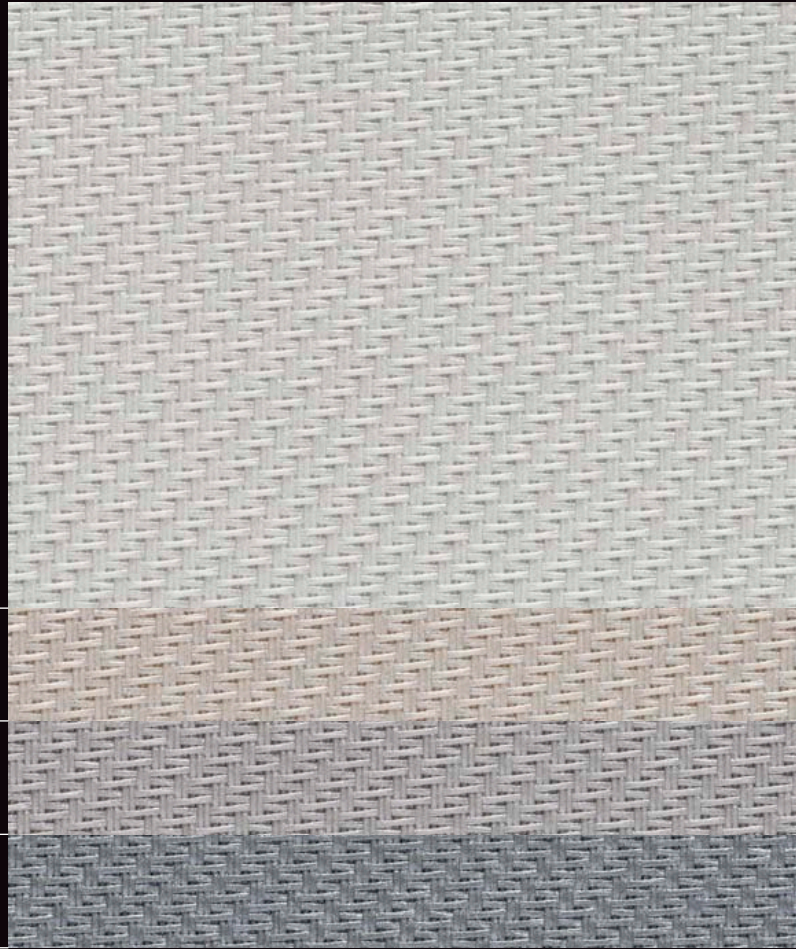
WIDTH: 285 CM

0202

2020

0707

0101

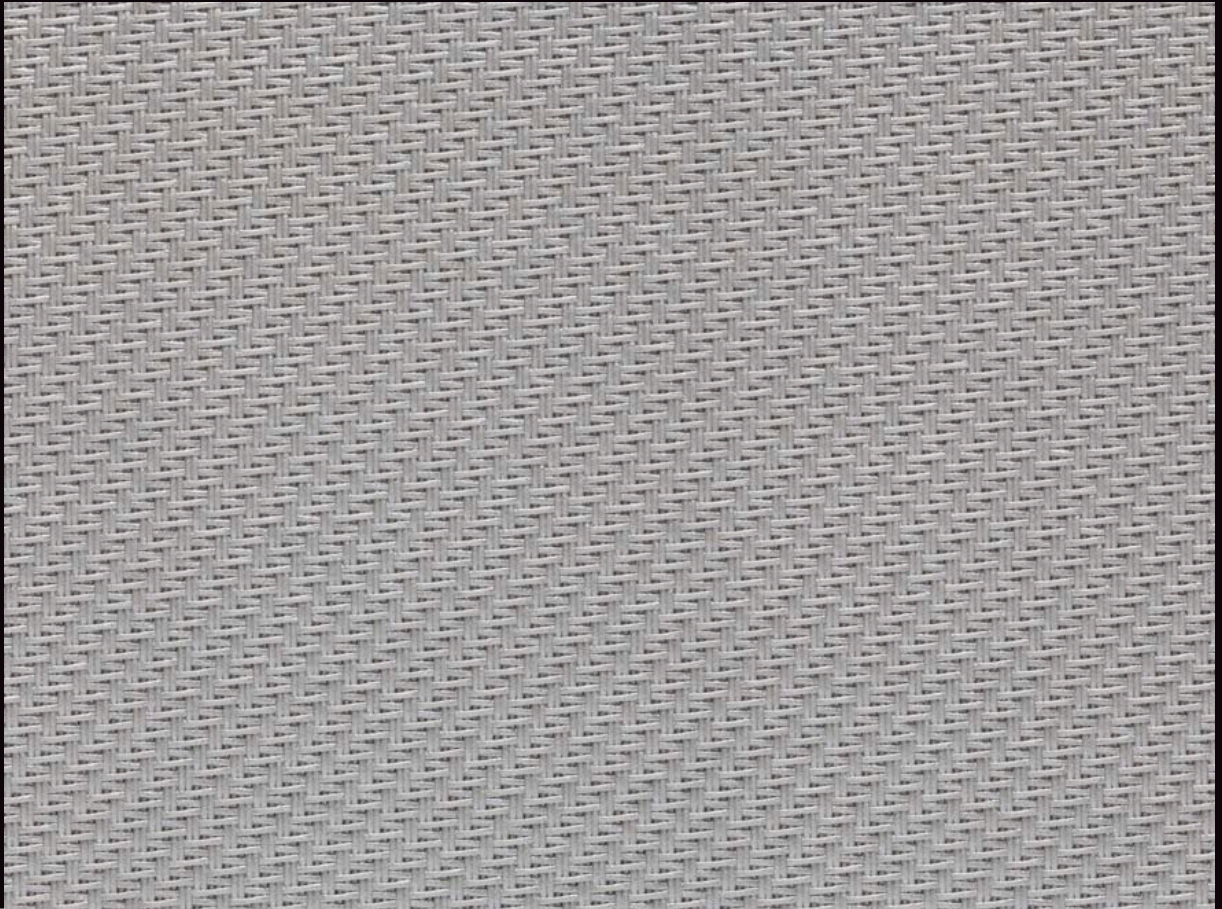


Colours may be slightly different from the actual ones

SERVICE

- Calculation of solar factor g_{tot} (glazing + blind)
- Spectral values and thermal & optical factors available on request
- Specification sheet
- A4 samples and prototypes
- Training on fabrics functionality

0707



THERMAL AND OPTICAL FACTORS in the European standard EN 14501

5500 MÉTAL OF 2 %	Thermal factors					Optical factors
	Fabric			Fabric + Glazing / gtot external blind		Tv
Colours (textil side factors)	Ts	Rs	As	C : gv = 0,59	D : gv = 0,32	
0202 White	14	67	19	0,10 ③	0,06 ④	12
2020 Linen	12	55	33	0,08 ④	0,05 ④	9
0707 Pearl	10	38	52	0,07 ④	0,05 ④	8
0101 Grey	5	21	74	0,04 ④	0,02 ④	3

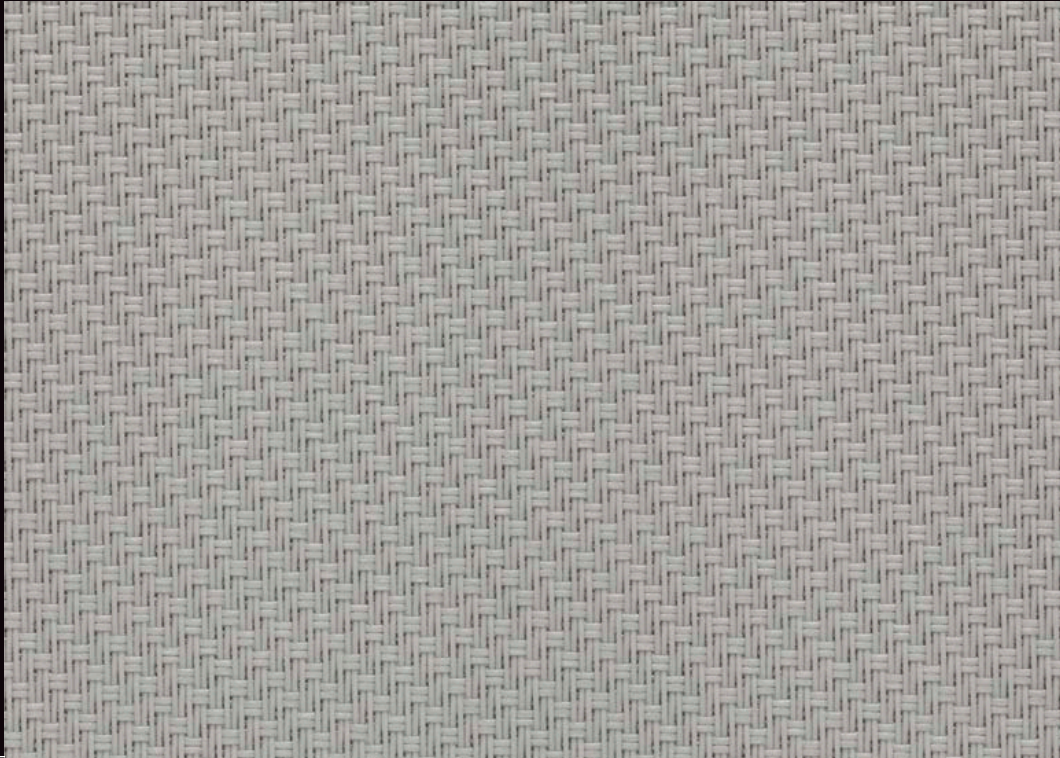
gv = 0,59: Solar factor of standard glazing (C), low-emission 4/16/4 double glazing filled with Argon (U value thermal transmittance = 1,2 W/m²K).

gv = 0,32: Solar factor of standard glazing (D), reflecting low-emission 4/16/4 double glazing filled with Argon (U value thermal transmittance = 1,1 W/m²K).

Comfort classification according to EN 14501 standard: ① very little effect ② little effect ③ moderate effect ④ good effect ⑤ very good effect

Samples tested according to EN 14500 standard defining the measurements and calculation methods as specified in the standard EN 13363-2 "Solar protection devices combined with glazing calculation of solar and light transmittance - part 2: EN 13363-2 detailed method" and EN 410 "Glass in building - Determination of luminous and solar characteristics of glazing".

0707



EXTERNAL AND INTERNAL APPLICATIONS



Roller blinds



Decorative panels



Projection shades



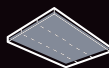
Velums



ZIP
Roller blinds



Printable



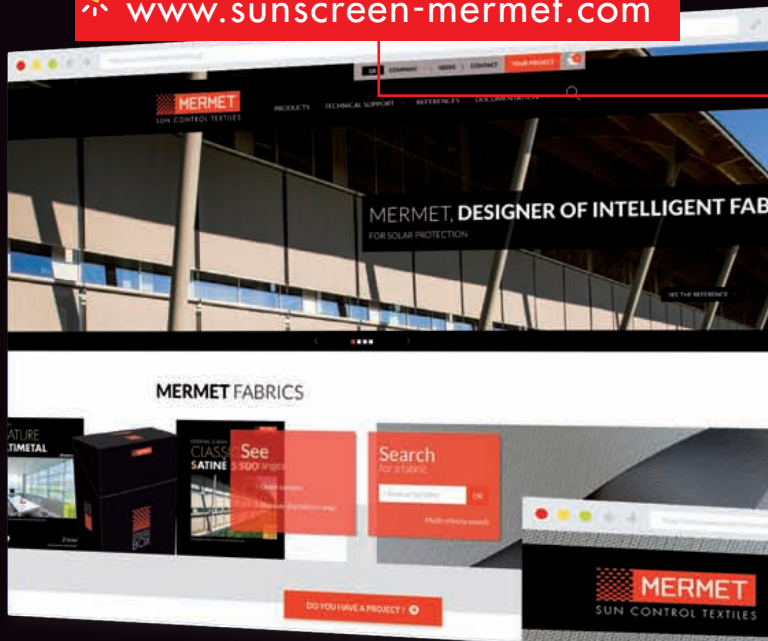
Stretched ceilings



Space fitting



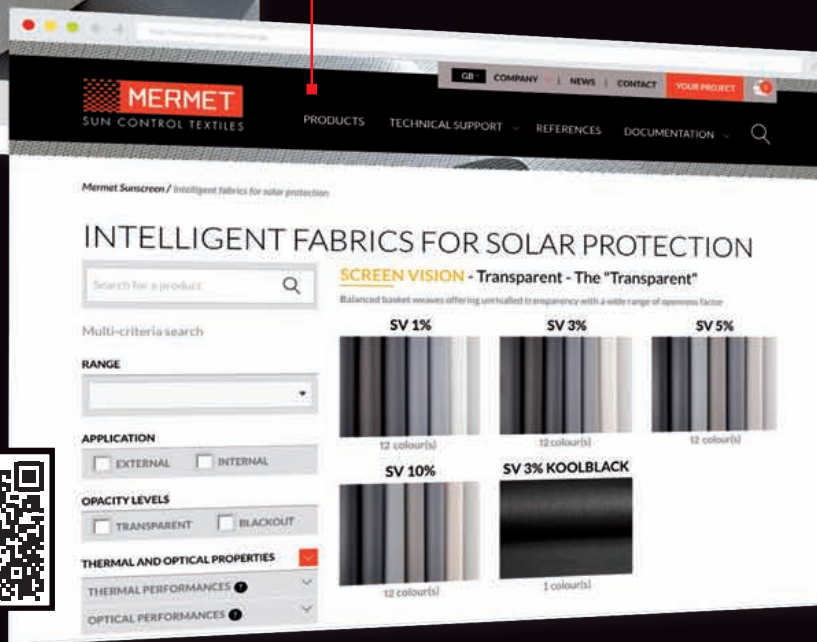
www.sunscreen-mermet.com



FIND IN 3 CLICKS THE FABRIC BEST SUITED to your project

- A search engine with performances criteria
- Many documents for download
- All products information available
- A library of references

Go directly to the
products catalog >



MERMET COLLECTION offers a wide choice of fabrics for external and internal application, from transparency to total darkness, for thermal and optical comfort. To receive other brochures from the collection, **contact us**.

SCREEN VISION / DESIGN / THERMIC / LOW E

EXTERNAL SCREEN CLASSIC

SCREEN NATURE

BLACKOUT 100 %

ACOUSTICS



58, chemin du Mont Maurin - 38630 Les Avenières Veyrins-Thuellin - France
Tel. +33(0) 474 336 615 - Fax +33(0) 474 339 729

This brochure must be read and interpreted in accordance with the General Terms & Conditions of Sale of MERMET SAS, with which it forms an indissoluble whole. The General Terms & Conditions of Sale that are current at any time are those contained on the MERMET SAS website at the following address: www.sunscreen-mermet.com.