

EXTERNAL SCREEN CLASSIC

NATTÉ 4503



INTELLIGENT FABRICS FOR SOLAR PROTECTION



EXTERNAL AND
INTERNAL APPLICATION

www.sunscreen-mermet.com

NATTÉ 4503

PERFECT GLARE CONTROL AND HEAT PROTECTION

96%

OF SOLAR
RADIATION REFLECTED

320 CM

LARGE-SIZED WINDOWS
OFFERING A SEAMLESS
DESIGN

■ Maximum **GLARE CONTROL**: up to **97% OF LIGHT RAYS FILTERED** ($T_v = 3\%$), comfort classification 1 according to EN 14501:2021 standard

■ Excellent **HEAT PROTECTION**: up to **96% OF SOLAR RADIATION REFLECTED** by external blinds ($g_{tot} = 0,04$ / glazing $g = 0,32$ and $U = 1,1$ W/m² K), comfort classification 4 (very good effect) according to EN 14501 standard

■ **ECONOMICAL: 2 WIDTHS (250 and 320 CM)** to help reduce waste when manufacturing fabric panels

■ Perfect match with side channels such as **ZIP**

■ **WEATHER-RESISTANT** and UV fading resistant

■ **DIMENSIONAL STABILITY, DURABILITY** (test of 10.000 cycles, class 3 NF EN 13561), **MECHANICAL RESISTANCE**: perfect flatness even in large dimensions

■ Health & Safety: conforms to standard requirements for buildings open to the public

TECHNICAL DATA

NATTÉ 4503			
Composition	42% Fibreglass - 58% PVC		
Fire, smoke classification and other official test reports*	M1 (F) - NFP 92 503 B1 (DE) - DIN 4102-1 Euroclass C-s3-d0 (EU) - EN 13501-1 mounted according to EN 13823 & EN 14716		BS (GB) - 476 Pt 6 & 7 Class 0 F3 (F) - NF F 16-101 HHV : 13,2 MJ/kg (7,39 MJ/m²)
Health, safety	Greenguard® GOLD : Guarantee of indoor air quality (VOC)		
Openness factor	3%		
UV screen	Up to 97%		
Widths	250 - 320 cm		
Weight/m²	560 g ± 5% - ISO 2286 - 2		
Thickness	0,53 mm ± 5% - ISO 2286 - 3		
Colour Fastness to light (scale of 8)	7/8 - ISO 105 B02 (white not graded)		
Mechanical resistance	Breaking	Tear	Folding
Warp	> 220 daN/5 cm	≥ 10 daN	≥ 120 daN/5 cm
Weft	> 200 daN/5 cm	≥ 9 daN	≥ 120 daN/5 cm
	ISO 1421	EN 1875-3	ISO 1421**
Elongation (warp and weft)	< 5% - ISO 1421		
Packaging	Rolls of 52 lm - Width 320 cm: rolls of 33 lm		
Making up	Advice note on request		

This product's technical data are in conformity with this brochure as of the date of publication. MERMET SAS reserves the right to change the technical data; only those provided on the company's website www.sunscreen-mermet.com shall be deemed to be authentic. Where applicable, MERMET SAS also reserves the right to withdraw this product from sale should any of the technical properties or characteristics set out above prove to be inadequate or rendered impossible as a result of a change in regulations or in knowledge or understanding.

* Reports available on request, please contact Mermet

** Internal procedure derived from ISO 1421 standard

WIDTHS: 250 - 320 CM

0207

0702

0707

0201

0102

0701

0101

3001

0202

0220

0210

0110

0720

0710

3006

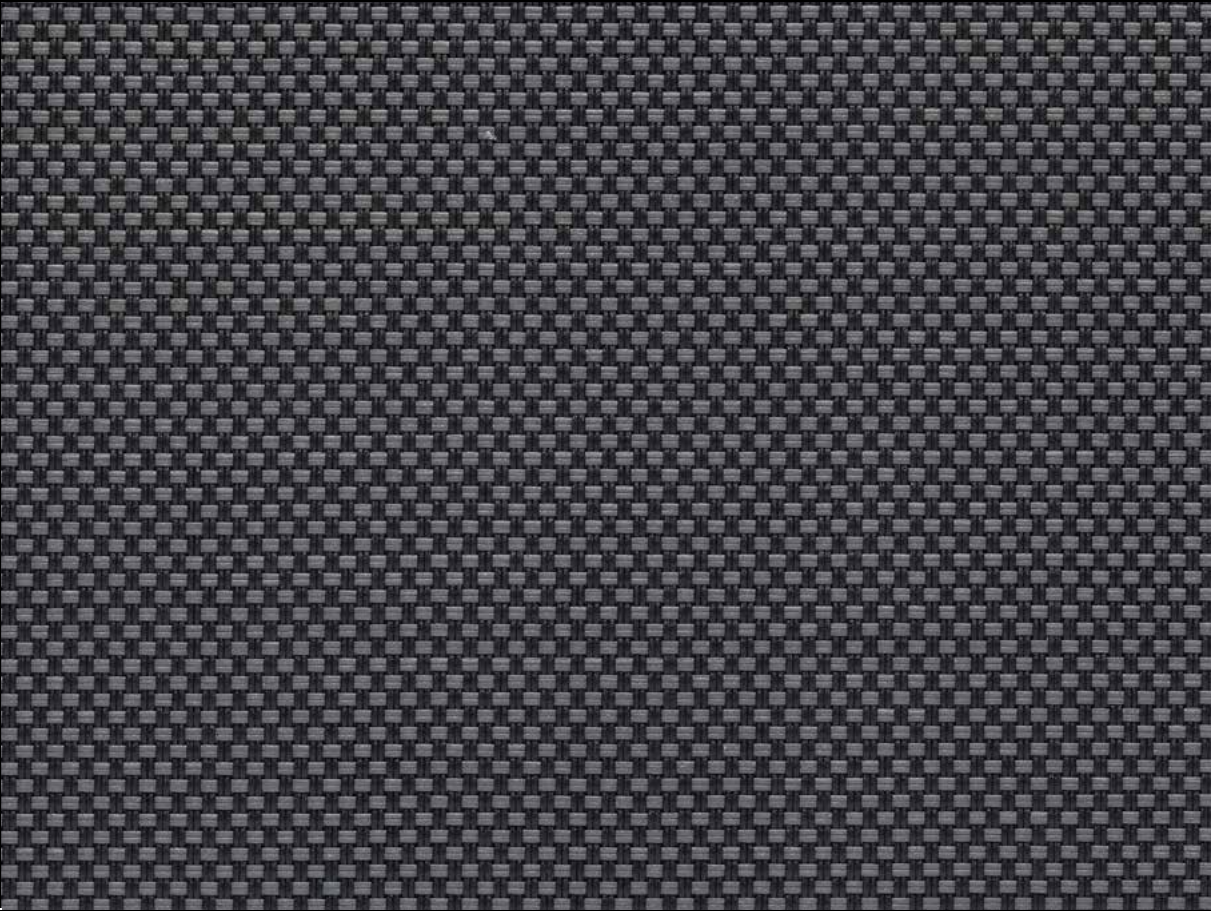
3030

Colours may be slightly different from the actual ones

SERVICE +

- Calculation of solar factor g_{tot} (glazing + blind)
- Spectral values and thermal & optical factors available on request
- Specification sheet
- A4 samples and prototypes
- Training on fabrics functionality

3001



THERMAL AND OPTICAL FACTORS in the European standard EN 14501

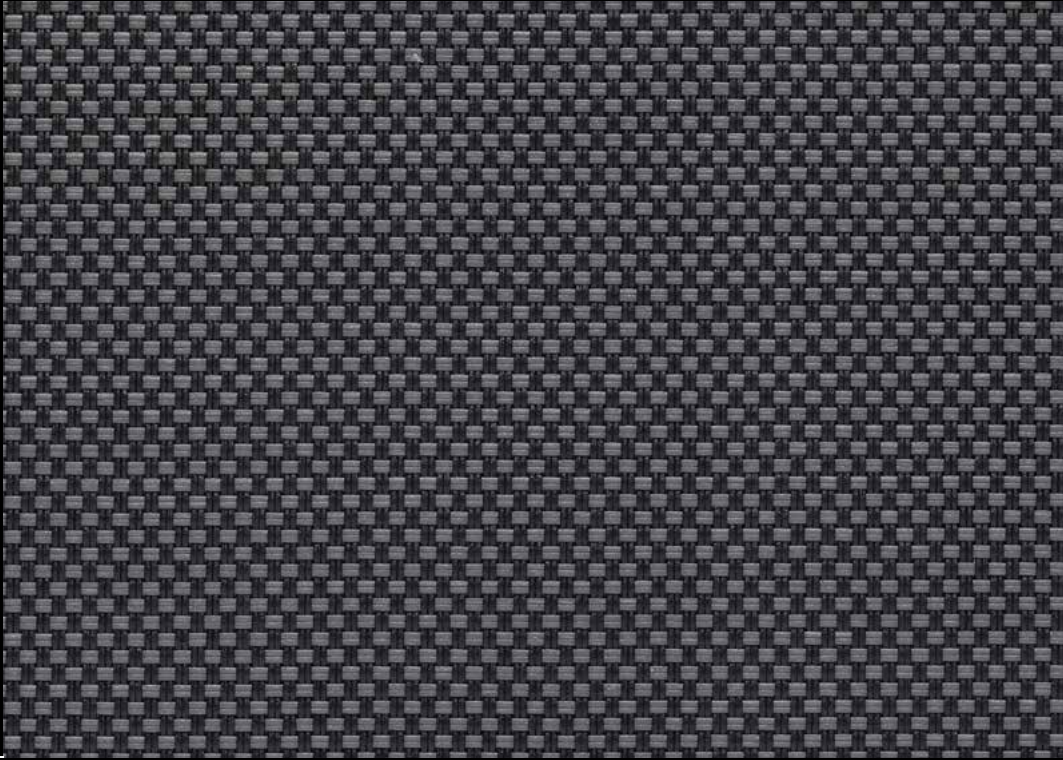
NATTÉ 4503 - OF 3%	Thermal factors					Optical factors
	Fabric			Fabric + Glazing / gtot external blind		Tv
Colours	Ts	Rs	As	C : gv = 0,59	D : gv = 0,32	
0202 White	18	68	14	0,14 ③	0,08 ④	18
0220 White Linen	18	61	21	0,13 ③	0,07 ④	17
0207 White Pearl	14	52	34	0,11 ③	0,07 ④	13
0702 Pearl White	14	50	36	0,10 ③	0,07 ④	12
0720 Pearl Linen	14	44	42	0,10 ③	0,07 ④	12
0210 White Sable	14	54	32	0,10 ③	0,07 ④	11
0707 Pearl	12	37	51	0,09 ④	0,06 ④	11
0710 Pearl Sable	12	39	49	0,09 ④	0,06 ④	10
0201 White Grey	10	42	48	0,08 ④	0,04 ④	7
0701 Pearl Grey	9	29	62	0,07 ④	0,05 ④	7
0102 Grey White	8	38	54	0,07 ④	0,04 ④	6
0110 Grey Sable	7	29	64	0,06 ④	0,05 ④	5
0101 Grey	6	20	74	0,05 ④	0,04 ④	4
3006 Charcoal Bronze	4	7	89	0,05 ④	0,04 ④	4
3030 Charcoal	4	6	90	0,05 ④	0,04 ④	4
3001 Charcoal Grey	4	11	85	0,05 ④	0,04 ④	3

gv = 0,59: Solar factor of standard glazing (C), low-emission 4/16/4 double glazing filled with Argon (U value thermal transmittance = 1,2 W/m²K).
gv = 0,32: Solar factor of standard glazing (D), reflecting low-emission 4/16/4 double glazing filled with Argon (U value thermal transmittance = 1,1 W/m²K).

Comfort classification according to EN 14501 standard: ① very little effect ② little effect ③ moderate effect ④ good effect ⑤ very good effect

Samples tested according to EN 14500 standard defining the measurements and calculation methods as specified in the standard EN 13363-2 "Solar protection devices combined with glazing calculation of solar and light transmittance - part 2: EN 13363-2 detailed method" and EN 410 "Glass in building - Determination of luminous and solar characteristics of glazing".

3001



EXTERNAL AND INTERNAL APPLICATIONS



Roller blinds



Decorative panels



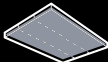
Projection shades



Velums



Printable



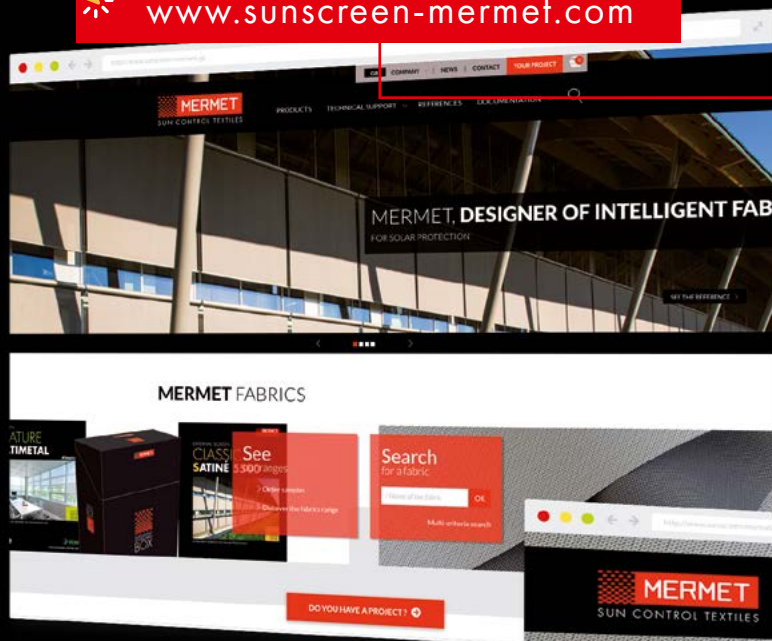
Stretched ceilings



Space fitting

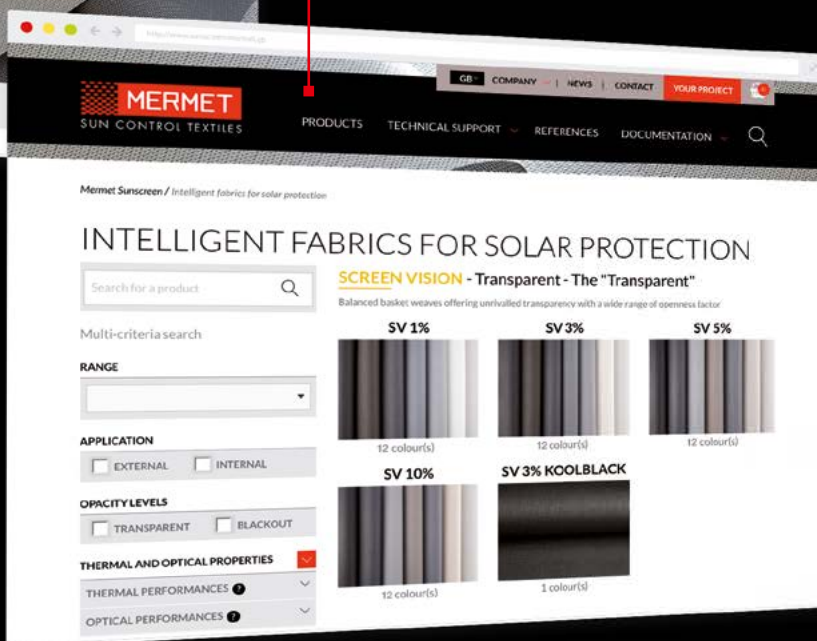


www.sunscreen-mermet.com



FIND IN 3 CLICKS
THE FABRIC BEST SUITED
 to your project

- A search engine with performances criteria
- Many documents for download
- All products information available
- A library of references



MERMET COLLECTION offers a **wide choice of fabrics** for external and internal application, from transparency to total darkness, for thermal and optical comfort. To receive other brochures from the collection, **contact us**.



SCREEN VISION / DESIGN / THERMIC / LOW E

EXTERNAL SCREEN CLASSIC

SCREEN NATURE

BLACKOUT 100 %

ACOUSTICS



58, chemin du Mont Maurin - 38630 Les Avenières Veyrins-Thuellin - France
 Tel. +33(0) 474 336 615 - Fax +33(0) 474 339 729

A division of the brand

MERMET

This brochure must be read and interpreted in accordance with the General Terms & Conditions of Sale of MERMET SAS, with which it forms an indissoluble whole. The General Terms & Conditions of Sale that are current at any time are those contained on the MERMET SAS website at the following address: www.sunscreen-mermet.com.