

EXTERNAL SCREEN CLASSIC

# ULTRAVISION



ULTRAVISION

EXTERNAL SCREEN CLASSIC

COLLECTION  
**2018**  
**2021**

INTELLIGENT FABRICS FOR SOLAR PROTECTION



EXTERNAL AND  
INTERNAL APPLICATION

[www.sunscreen-mermet.com](http://www.sunscreen-mermet.com)

# ULTRAVISION

## OPEN TEXTILE ENVELOPE FOR EXTERNAL AND INTERNAL APPLICATION

**37%**

OF VISIBLE LIGHT TRANSMITTANCE

TOTAL  
**TRANSPARENCY**

- **VERY OPEN-WEAVE FABRIC** (OF 25%) for maximum use of **NATURAL LIGHT**, comfort classification 3 (good effect) according to EN 14501 standard
- Helps reduce energy consumption in buildings with less artificial light is required. Artificial light is a key source of energy consumption in commercial buildings
- **THERMAL COMFORT**: up to **86% OF SOLAR RADIATION REFLECTED** by external blinds ( $g_{tot} = 0,14$  / glazing  $g = 0,32$  and  $U = 1,1$ )
- **WEATHER-RESISTANT** and UV fading resistant
- **EXCELLENT DURABILITY**: mechanical strength test of 10.000 cycles (class 3 NF EN 13561)
- Health & Safety: conforms to standard requirements for buildings open to the public

### TECHNICAL DATA

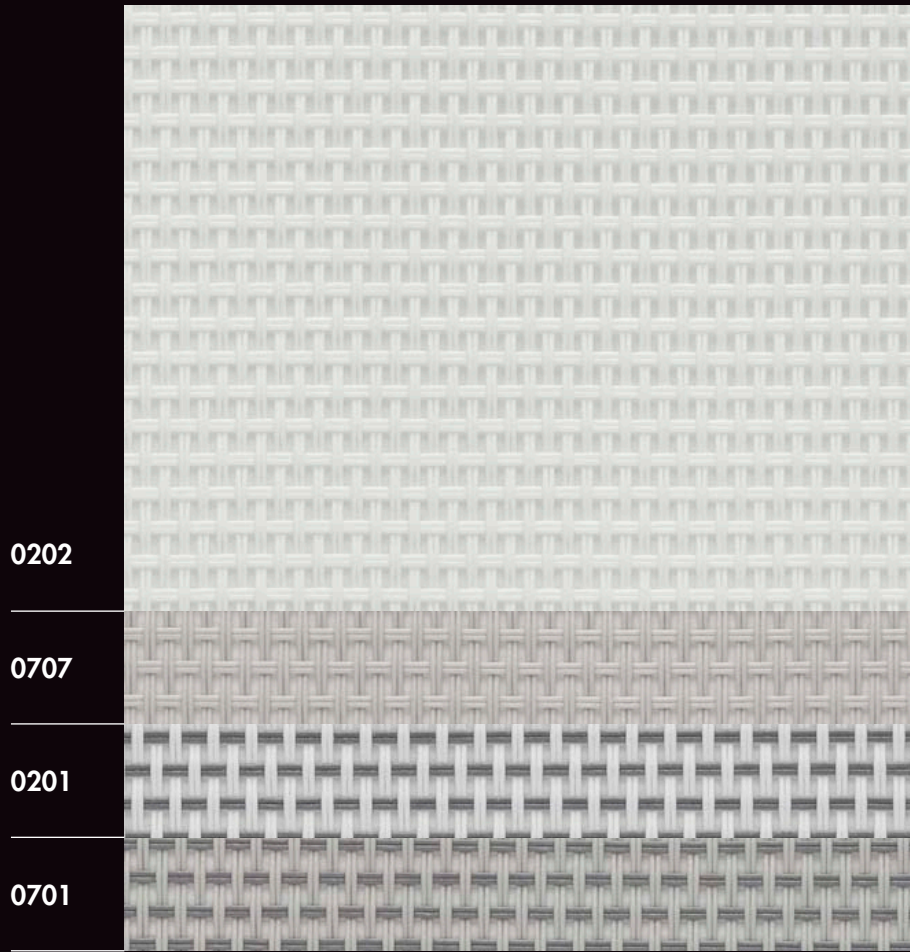
ULTRAVISION			
Composition	42% Fibreglass - 58% PVC		
Fire, smoke classification and other official test reports*	M1 (F) - NFP 92 503 BS (GB) - 476 Pt 6 & 7 Class 0		
Health, safety	Greenguard® GOLD: Guarantee of indoor air quality (VOC)		
Openness factor	25%		
UV screen	Up to 76%		
Width	250 cm		
Weight/m <sup>2</sup>	365 g ± 5% - ISO 2286 - 2		
Thickness	0,65 mm ± 5% - ISO 2286 - 3		
Colour Fastness to light (scale of 8)	7/8 - ISO 105 B02 (white not graded)		
Mechanical resistance	Breaking	Tear	Folding
Warp	> 160 daN/5 cm	≥ 10 daN	≥ 120 daN/5 cm
Weft	> 100 daN/5 cm	≥ 10 daN	≥ 70 daN/5 cm
	ISO 1421	EN 1875-3	ISO 1421**
Elongation (warp and weft)	< 5% - ISO 1421		
Packaging	Rolls of 52 lm		
Making up	Advice note on request		

This product's technical data are in conformity with this brochure as of the date of publication. MERMET SAS reserves the right to change the technical data; only those provided on the company's website [www.sunscreen-mermet.com](http://www.sunscreen-mermet.com) shall be deemed to be authentic. Where applicable, MERMET SAS also reserves the right to withdraw this product from sale should any of the technical properties or characteristics set out above prove to be inadequate or rendered impossible as a result of a change in regulations or in knowledge or understanding.

\* Reports available on request, please contact Mermet

\*\* Internal procedure derived from ISO 1421 standard

WIDTH: 250 CM

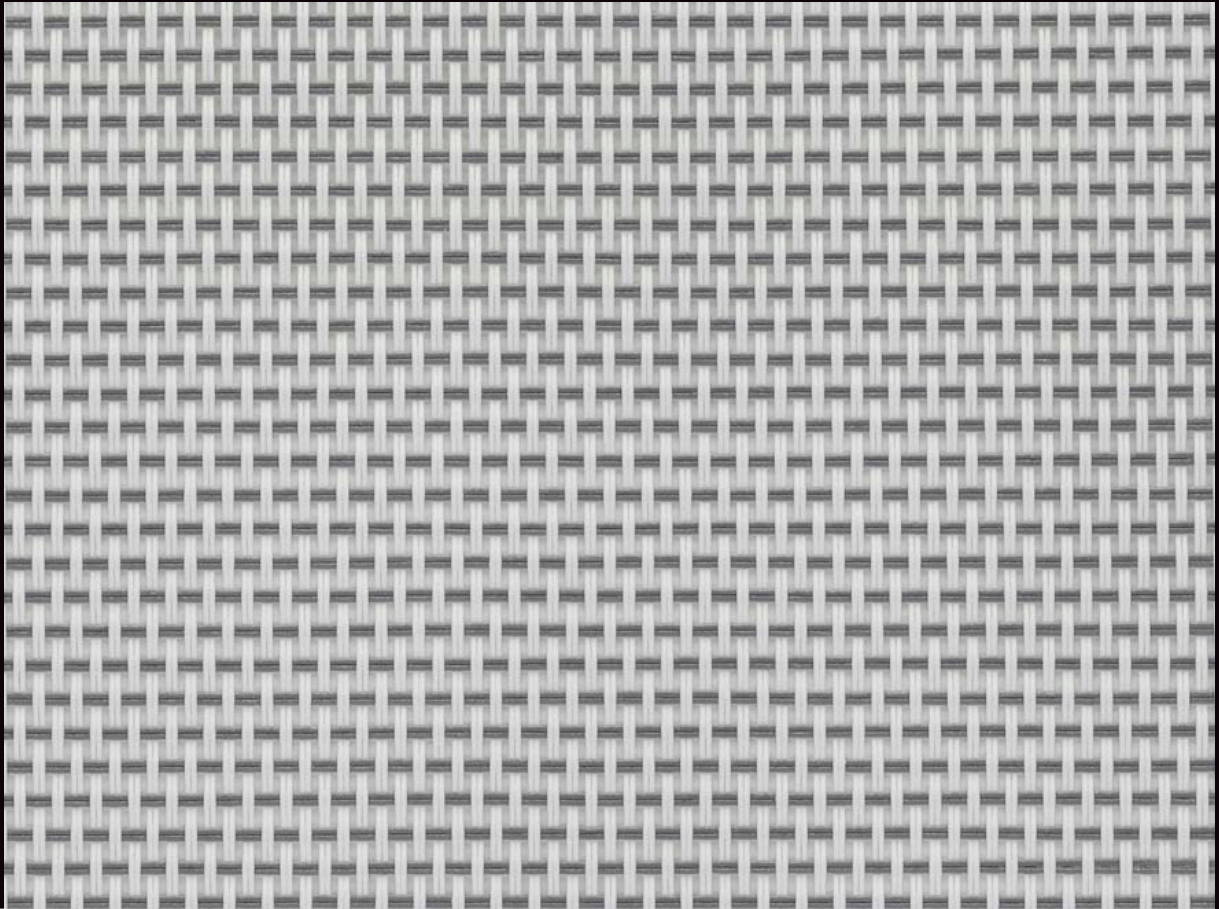


*Colours may be slightly different from the actual ones*

## SERVICE +

- Calculation of solar factor g<sub>tot</sub> (glazing + blind)
- Spectral values and thermal & optical factors available on request
- Specification sheet
- A4 samples and prototypes
- Training on fabrics functionality

0201



## THERMAL AND OPTICAL FACTORS in the European standard EN 14501

ULTRAVISION OF 25%	Thermal factors					Optical factors
	Fabric			Fabric + Glazing / gtot external blind		Tv
Colours	Ts	Rs	As	C : gv = 0,59	D : gv = 0,32	
0202 White	38	52	10	0,27 <b>2</b>	0,15 <b>2</b>	37
0707 Pearl	35	30	35	0,24 <b>2</b>	0,14 <b>3</b>	35
0201 White Grey	34	37	29	0,24 <b>2</b>	0,14 <b>3</b>	33
0701 Pearl Grey	33	26	41	0,22 <b>2</b>	0,14 <b>3</b>	32

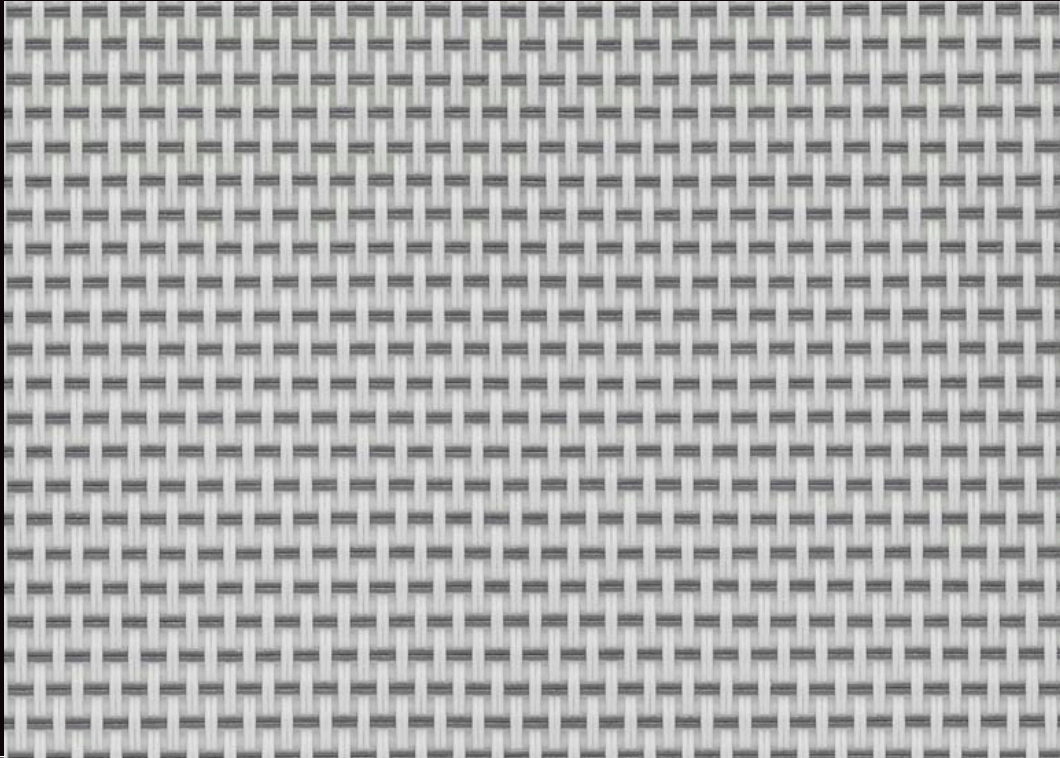
gv = 0,59: Solar factor of standard glazing (C), low-emission 4/16/4 double glazing filled with Argon (U value thermal transmittance = 1,2 W/m<sup>2</sup>K).

gv = 0,32: Solar factor of standard glazing (D), reflecting low-emission 4/16/4 double glazing filled with Argon (U value thermal transmittance = 1,1 W/m<sup>2</sup>K).

Comfort classification according to EN 14501 standard: **0** very little effect **1** little effect **2** moderate effect **3** good effect **4** very good effect

Samples tested according to EN 14500 standard defining the measurements and calculation methods as specified in the standard EN 13363-2 "Solar protection devices combined with glazing calculation of solar and light transmittance - part 2: EN 13363-2 detailed method" and EN 410 "Glass in building - Determination of luminous and solar characteristics of glazing".

0201



## EXTERNAL AND INTERNAL APPLICATIONS



Roller blinds



Decorative panels



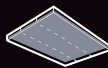
Projection shades



Velums



Printable



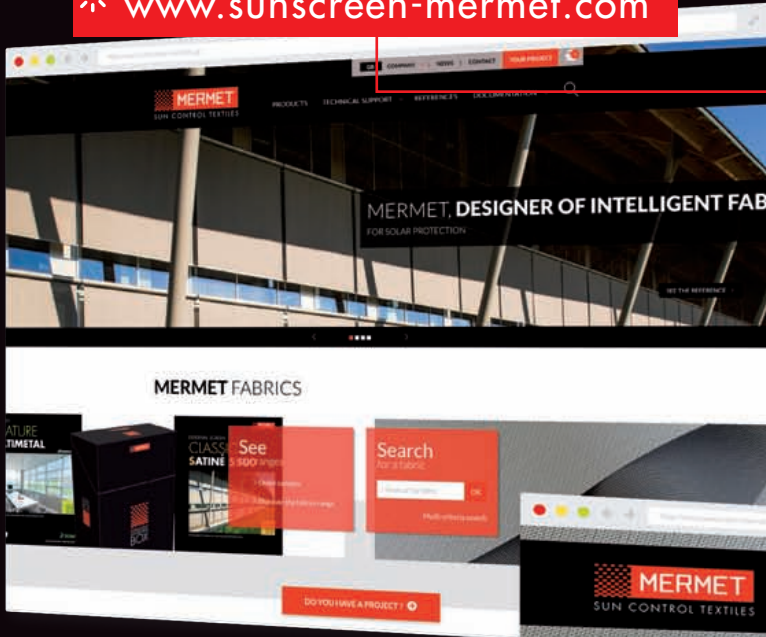
Stretched ceilings



Space fitting



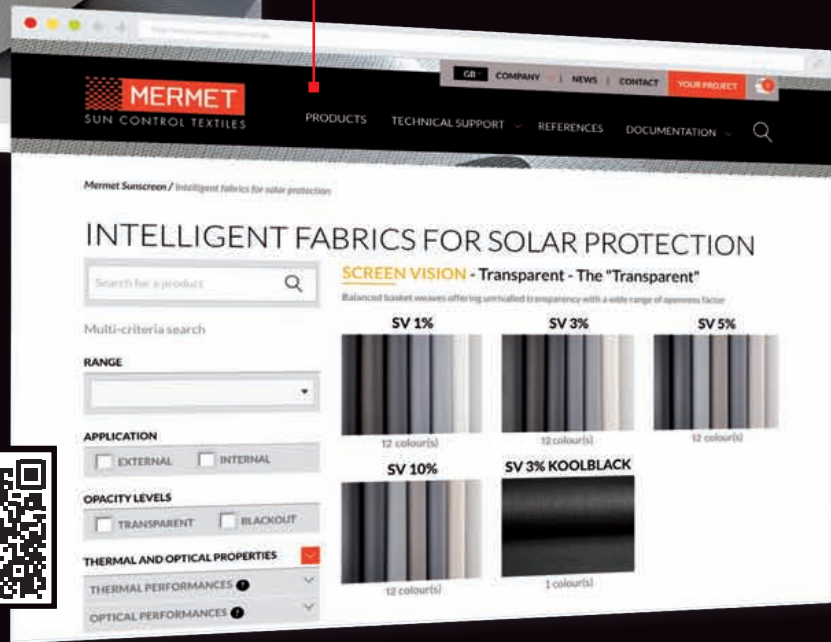
[www.sunscreen-mermet.com](http://www.sunscreen-mermet.com)



## FIND IN 3 CLICKS THE FABRIC BEST SUITED to your project

- A search engine with performances criteria
- Many documents for download
- All products information available
- A library of references

Go directly to the  
products catalog >



**MERMET COLLECTION** offers a wide choice of fabrics for external and internal application, from transparency to total darkness, for thermal and optical comfort. To receive other brochures from the collection, **contact us**.



SCREEN VISION / DESIGN / THERMIC / LOW E

EXTERNAL SCREEN CLASSIC

SCREEN NATURE

BLACKOUT 100 %

ACOUSTICS



58, chemin du Mont Maurin - 38630 Les Avenières Veyrins-Thuellin - France  
Tel. +33(0) 474 336 615 - Fax +33(0) 474 339 729

This brochure must be read and interpreted in accordance with the General Terms & Conditions of Sale of MERMET SAS, with which it forms an indissoluble whole. The General Terms & Conditions of Sale that are current at any time are those contained on the MERMET SAS website at the following address: [www.sunscreen-mermet.com](http://www.sunscreen-mermet.com).