

SCREEN THERMIC

S2 1% - 3% - 5%



S2 1% - 3% - 5%

SCREEN THERMIC

INTELLIGENT FABRICS FOR SOLAR PROTECTION



INTERNAL
APPLICATION

S2 1%-3%-5%

TECHNICALLY ADVANCED TEXTILE: DOUBLE-SIDED FABRICS

**3 OPENNESS
FACTORS** TO OPTIMIZE
SOLAR PROTECTION ACCORDING
THE ORIENTATION OF BUILDING

- **DOUBLE-SIDED FABRICS** in high-contrast colours that combine **THERMAL AND VISUAL COMFORT**
- Good outward visibility and perfect glare control with the dark-coloured inside facing fabric: up to **97% OF LIGHT RAYS FILTERED** (S2 1% : Tv = 3%) comfort classification 3 (good effect) according to EN 14501 standard
- **MAXIMUM HEAT PROTECTION** with the white-coloured outside facing fabric that **REFLECTS SOLAR RADIATION**: up to 87% of solar energy eliminated (gtot = 0,13 / glazing g = 0,32 and U = 1,1 W/m²K)
- **DIMENSIONAL STABILITY, DURABILITY** (test of 10.000 cycles, class 3 NF EN 13120), **MECHANICAL RESISTANCE**: perfect flatness even in large dimensions
- Health & Safety: conforms to standard requirements for buildings open to the public

INTERNAL APPLICATIONS



Roller blinds



Roman shades



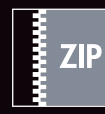
Decorative panels



Vertical blinds



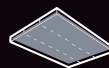
Velums



ZIP Roller blinds



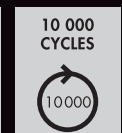
Printable



Stretched ceilings



Space fitting



TECHNICAL DATA

	S2 1%	S2 3%	S2 5%
Composition	36% Fibreglass - 64% PVC	36% Fibreglass - 64% PVC	36% Fibreglass - 64% PVC
Fire, smoke classification and other official test reports*	M1 (F) - NFP 92 503 B1 (DE) - DIN 4102-1 BS (GB) - 476 Pt 6 & 7 Class 0 BS (GB) - 5867 Euroclass C-s3-d0 (EU) - EN 13501-1 mounted according to EN 13823 & EN 14716	CLASE 1 (SP) - EN 13773 C UNO (IT) - UNI 9177 FR (US) - NFPA 701 HHV: 15,7 MJ/kg (7,06 MJ/m ²)	M1 (F) - NFP 92 503 B1 (DE) - DIN 4102-1 BS (GB) - 476 Pt 6 & 7 Class 0 BS (GB) - 5867 Euroclass C-s3-d0 (EU) - EN 13501-1 mounted according to EN 13823 & EN 14716
Health, safety	Greenguard® GOLD: Guarantee of indoor air quality (VOC) Antibacterial: More than 99% of bacteria destroyed - ASTM E 2180	Greenguard® GOLD: Guarantee of indoor air quality (VOC) Antibacterial: More than 99% of bacteria destroyed - ASTM E 2180	Greenguard® GOLD: Guarantee of indoor air quality (VOC) Antibacterial: More than 99% of bacteria destroyed - ASTM E 2180
Openness factor	1%	3%	5%
UV screen	Up to 99%	Up to 97%	Up to 96%
Width	250 cm	250 cm	250 cm
Weight/m²	450 g ± 5% - ISO 2286 - 2	425 g ± 5% - ISO 2286 - 2	410 g ± 5% - ISO 2286 - 2
Thickness	0,58 mm ± 5% - ISO 2286 - 3	0,58 mm ± 5% - ISO 2286 - 3	0,60 mm ± 5% - ISO 2286 - 3
Colour Fastness to light (scale of 8)	7/8 - ISO 105 B02 (white not graded)	7/8 - ISO 105 B02 (white not graded)	7/8 - ISO 105 B02 (white not graded)
Mechanical resistance	Breaking	Tear	Folding
Warp	> 130 daN/5 cm	≥ 4 daN	≥ 65 daN/5 cm
Weft	> 130 daN/5 cm	≥ 4 daN	≥ 60 daN/5 cm
	ISO 1421	EN 1875-3	ISO 1421**
Elongation (warp and weft)	< 5% - ISO 1421	< 5% - ISO 1421	< 5% - ISO 1421
Packaging	Rolls of 33 lm	Rolls of 33 lm	Rolls of 33 lm
Making up	Advice note on request	Advice note on request	Advice note on request

THERMAL AND OPTICAL FACTORS in the European standard EN 14501

Colours (clear side factors)	Thermal factors					Optical factors
	Fabric			Fabric + Glazing / gtot internal blind		Tv
	Ts	Rs	As	C : gv = 0,59	D : gv = 0,32	
S2 1% - OF 1%						
0202 White	19	69	12	0,29 ②	0,13 ③	19
0220 White Linen	17	64	19	0,32 ②	0,15 ②	15
0207 White Pearl	12	59	29	0,33 ②	0,16 ②	11
0210 White Sable	12	59	29	0,33 ②	0,17 ②	9
0201 White Grey	9	54	37	0,35 ①	0,18 ②	6
0206 White Bronze	4	48	48	0,36 ①	0,19 ②	4
0230 White Charcoal	3	46	51	0,38 ①	0,19 ②	3
S2 3% - OF 3%						
0202 White	22	66	12	0,30 ②	0,14 ③	21
0220 White Linen	20	62	18	0,34 ②	0,17 ②	18
0207 White Pearl	15	58	27	0,34 ②	0,17 ②	14
0210 White Sable	15	57	28	0,34 ②	0,17 ②	12
0201 White Grey	11	53	36	0,36 ①	0,18 ②	8
0206 White Bronze	7	48	45	0,37 ①	0,19 ②	6
0230 White Charcoal	7	47	46	0,37 ①	0,19 ②	6
S2 5% - OF 5%						
0202 White	24	64	12	0,31 ②	0,15 ②	23
0220 White Linen	22	62	16	0,32 ②	0,16 ②	20
0207 White Pearl	17	57	26	0,35 ①	0,17 ②	16
0210 White Sable	16	59	25	0,34 ②	0,17 ②	14
0201 White Grey	14	52	34	0,37 ①	0,19 ②	11
0206 White Bronze	9	49	42	0,38 ①	0,19 ②	9
0230 White Charcoal	8	47	45	0,37 ①	0,19 ②	9

gv = 0,59: Solar factor of standard glazing (C), low-emission 4/16/4 double glazing filled with Argon (U value thermal transmittance = 1,2 W/m²K).

gv = 0,32: Solar factor of standard glazing (D), reflecting low-emission 4/16/4 double glazing filled with Argon (U value thermal transmittance = 1,1 W/m²K).

Comfort classification according to EN 14501 standard: ① very little effect ② little effect ③ moderate effect ④ good effect ⑤ very good effect

Samples tested according to EN 14500 standard defining the measurements and calculation methods as specified in the standard EN 13363-2 "Solar protection devices combined with glazing calculation of solar and light transmittance - part 2: EN 13363-2 detailed method" and EN 410 "Glass in building - Determination of luminous and solar characteristics of glazing".

These product's technical data are in conformity with this brochure as of the date of publication. MERMET SAS reserves the right to change the technical data; only those provided on the company's website www.sunscreen-mermet.com shall be deemed to be authentic. Where applicable, MERMET SAS also reserves the right to withdraw these products from sale should any of the technical properties or characteristics set out above prove to be inadequate or rendered impossible as a result of a change in regulations or in knowledge or understanding.

* Reports available on request, please contact Mermet

** Internal procedure derived from ISO 1421 standard

SERVICE +

- Calculation of solar factor gtot (glazing + blind)
- Spectral values and thermal & optical factors available on request
- Specification sheet
- A4 samples and prototypes
- Training on fabrics functionality

WIDTH: 250 CM

0202

0207

0220

0210

0206

0201

0230



Colours may be slightly different from the actual ones

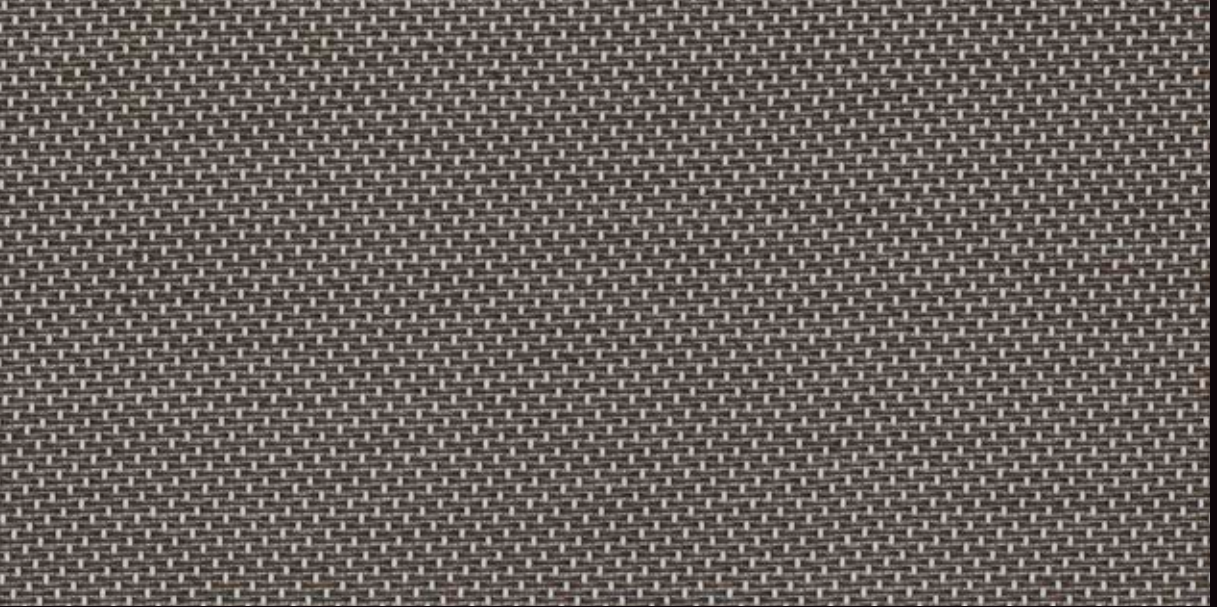
S2 1%
0206



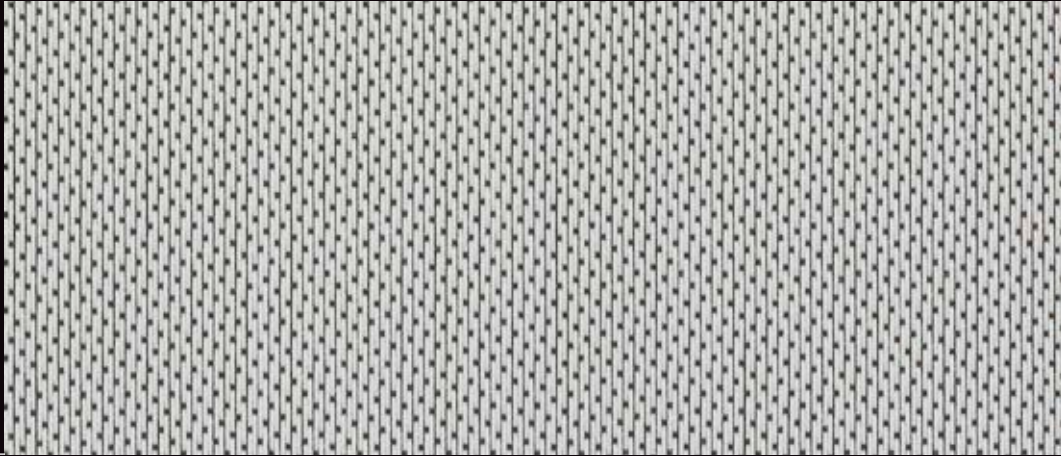
S2 3%
0206



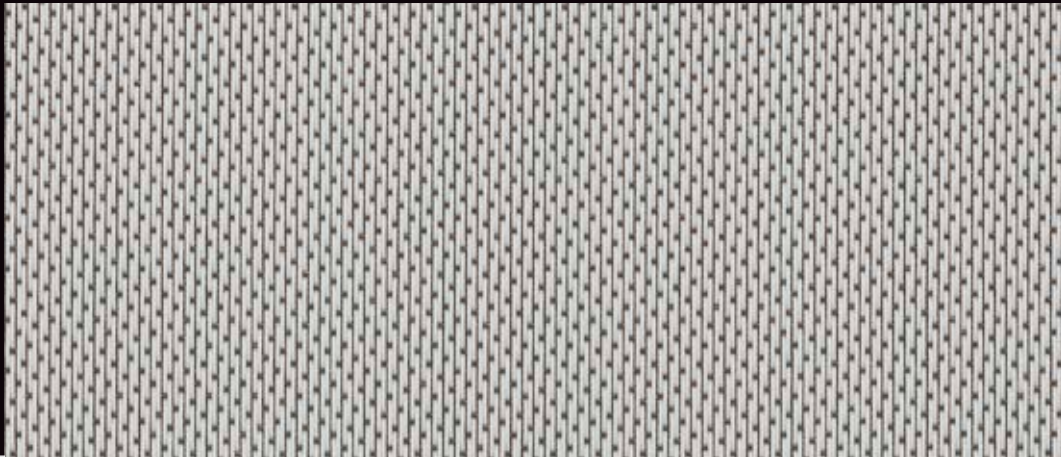
S2 5%
0206



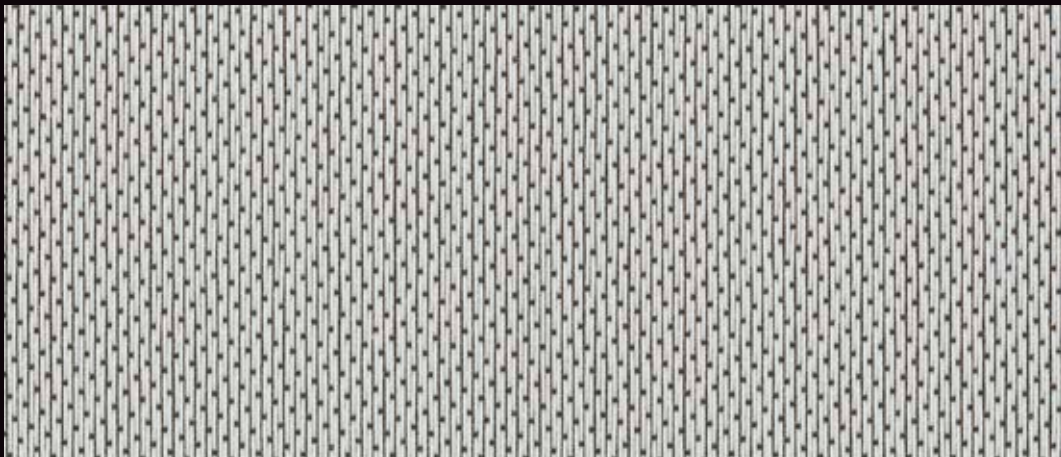
S2 1%
0206



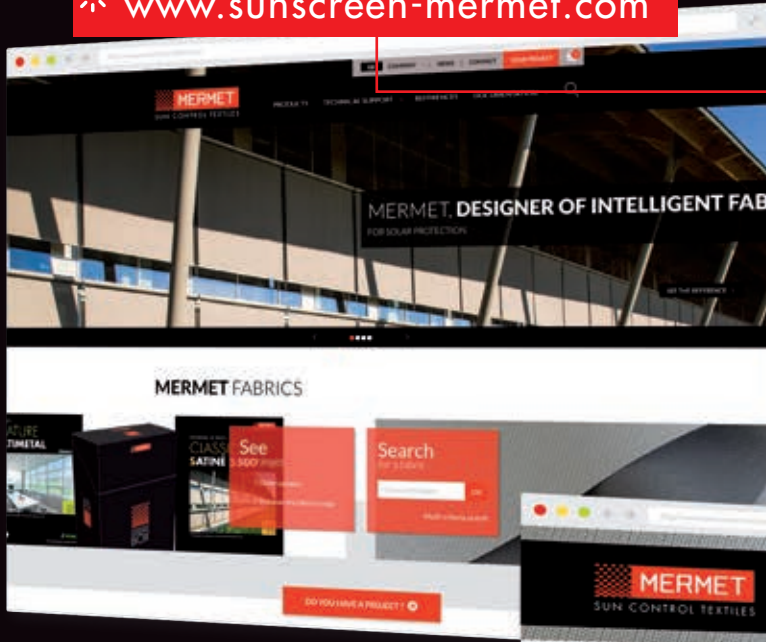
S2 3%
0206



S2 5%
0206

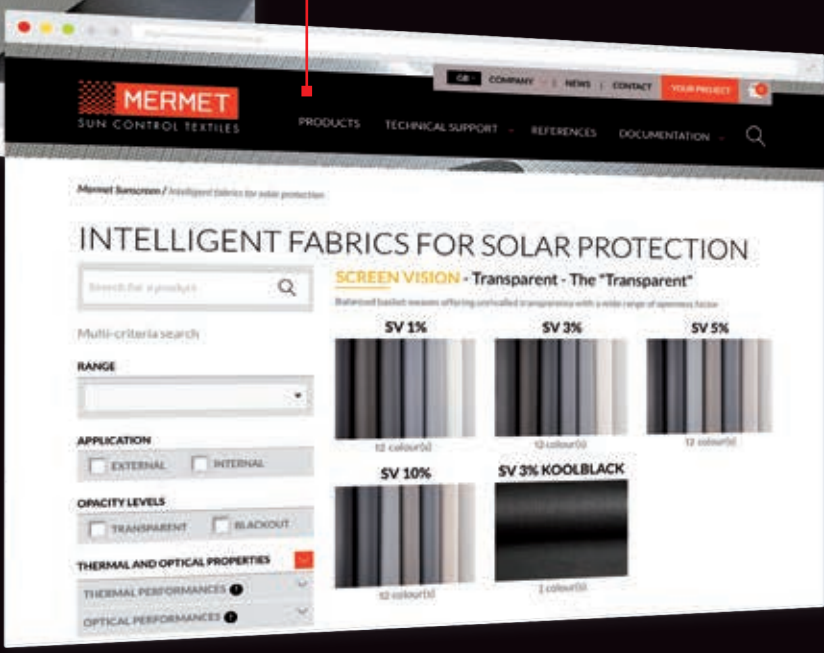


 www.sunscreen-mermet.com



FIND IN 3 CLICKS
THE FABRIC BEST SUITED
 to your project

- A search engine with performances criteria
- Many documents for download
- All products information available
- A library of references



 **MERMET COLLECTION** offers a **wide choice of fabrics** for external and internal application, from transparency to total darkness, for thermal and optical comfort. To receive other brochures from the collection, **contact us**.



58, chemin du Mont Maurin - 38630 Les Avenières Veyrins-Thuellin - France
 Tel. +33(0) 474 336 615 - Fax +33(0) 474 339 729

This brochure must be read and interpreted in accordance with the General Terms & Conditions of Sale of MERMET SAS, with which it forms an indissoluble whole. The General Terms & Conditions of Sale that are current at any time are those contained on the MERMET SAS website at the following address: www.sunscreen-mermet.com.

permatco + caractis V4 - 05/2022 © : Riedelcor - Palacio de Justicia de Zaragoza - Sergio Sebastian - Mermel SAS