

## SCREEN VISION

# SV 1% - 3% - 5% - 10%



SV 1% - 3% - 5% - 10%

SCREEN VISION

COLLECTION  
**2018**  
**2021**

INTELLIGENT FABRICS FOR SOLAR PROTECTION



INTERNAL  
APPLICATION

# SV 1%-3%-5%-10%

## BASKET WEAVE FABRICS TO COMBINE VISUAL COMFORT WITH TRANSPARENCY

**320** CM

LARGE-SIZED WINDOWS OFFERING A SEAMLESS DESIGN

**4** OPENNESS

**FACTORS** TO OPTIMIZE SOLAR PROTECTION ACCORDING TO THE ORIENTATION OF BUILDING

- **EXCELLENT GLARE CONTROL:** up to **99% OF LIGHT RAYS FILTERED** (SV 1%), comfort classification 3 (good effect) according to EN 14501 standard
- **MAXIMUM TRANSPARENCY** (SV 10%) and **INCOMING OF NATURAL LIGHT** to improve the energy efficiency of buildings
- **INTERNAL THERMAL COMFORT:** up to 87% of solar energy rejected ( $g_{tot} = 0,13$  / glazing  $g = 0,32$  and  $U = 1,1$  W/m<sup>2</sup>K)
- **ECONOMICAL: 3 WIDTHS (200, 250 and 320 CM)** to reduce waste when making fabric panels
- **DIMENSIONAL STABILITY, DURABILITY** (test of 10.000 cycles, class 3 NF EN 13120), **MECHANICAL RESISTANCE:** perfect flatness even in large dimensions
- **Health & Safety:** conforms to standard requirements for buildings open to the public

### INTERNAL APPLICATIONS



Roller blinds



Roman shades



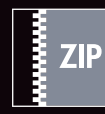
Decorative panels



Vertical blinds



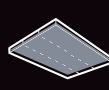
Velums



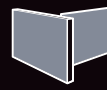
ZIP Roller blinds



Printable



Stretched ceilings



Space fitting



# TECHNICAL DATA

	SV 1%	SV 3%	SV 5%	SV 10%
<b>Composition</b>	36% Fibreglass - 64% PVC		36% Fibreglass - 64% PVC	
<b>Fire, smoke classification and other official test reports*</b>	<b>M1</b> (F) - NFP 92 503 <b>B1</b> (DE) - DIN 4102-1 <b>BS</b> (GB) - 476 Pt 6 & 7 Class 0 / <b>BS</b> (GB) - 5867 <b>Euroclass C-s3-d0</b> (EU) - EN 13501-1 mounted according to EN 13823 & EN 14716		<b>M1</b> (F) - NFP 92 503 <b>B1</b> (DE) - DIN 4102-1 <b>BS</b> (GB) - 476 Pt 6 & 7 Class 0 / <b>BS</b> (GB) - 5867 <b>Euroclass C-s3-d0</b> (EU) - EN 13501-1 mounted according to EN 13823 & EN 14716	
<b>Health, safety</b>	<b>Greenguard® GOLD:</b> Guarantee of indoor air quality (VOC) <b>Antibacterial:</b> More than 99% of bacteria destroyed - ASTM E 2180		<b>Greenguard® GOLD:</b> Guarantee of indoor air quality (VOC) <b>Antibacterial:</b> More than 99% of bacteria destroyed - ASTM E 2180	
<b>Openness factor</b>	1%	3%	5%	10%
<b>UV screen</b>	Up to 99%	Up to 98%	Up to 94%	Up to 90%
<b>Widths</b>	200 - 250 - 320 cm		200 - 250 - 320 cm	
<b>Weight/m²</b>	410 g ± 5% - ISO 2286 - 2	385 g ± 5% - ISO 2286 - 2	375 g ± 5% - ISO 2286 - 2	350 g ± 5% - ISO 2286 - 2
<b>Thickness</b>	0,48 mm ± 5% - ISO 2286 - 3		0,42 mm ± 5% - ISO 2286 - 3	0,45 mm ± 5% - ISO 2286 - 3
<b>Colour Fastness to light</b> (scale of 8)	7/8 - ISO 105 B02 (white not graded)		7/8 - ISO 105 B02 (white not graded)	
<b>Mechanical resistance</b>	<b>Warp</b>	<b>Weft</b>	<b>Warp</b>	<b>Weft</b>
<b>Breaking</b> (daN/5 cm) - ISO 1421	> 160	> 130	> 180	> 100
<b>Tear</b> (daN) - EN 1875-3	≥ 5	≥ 3	≥ 5	≥ 3
<b>Folding</b> (daN/5 cm) - ISO 1421**	≥ 70	≥ 70	≥ 70	≥ 70
<b>Elongation</b> (warp and weft)	< 5% - ISO 1421		< 5% - ISO 1421	
<b>Packaging</b>	Rolls of 33 lm		Rolls of 33 lm	
<b>Making up</b>	Advice note on request		Advice note on request	

These product's technical data are in conformity with this brochure as of the date of publication. MERMET SAS reserves the right to change the technical data; only those provided on the company's website [www.sunscreen-mermet.com](http://www.sunscreen-mermet.com) shall be deemed to be authentic. Where applicable, MERMET SAS also reserves the right to withdraw these products from sale should any of the technical properties or characteristics set out opposite prove to be inadequate or rendered impossible as a result of a change in regulations or in knowledge or understanding.

\* Reports available on request, please contact Mermet

\*\* Internal procedure derived from ISO 1421 standard

\*\*\* SV 10% only

# THERMAL AND OPTICAL FACTORS in the European standard EN 14501

Colours	Thermal factors					Optical factors
	Fabric		Fabric + Glazing / gtot internal blind			Tv
	Ts	Rs	As	C : gv = 0,59	D : gv = 0,32	
<b>SV 1% - OF 1%</b>						
0202 White	18	70	12	0,29 ②	0,13 ③	17
0220 White Linen	19	62	19	0,32 ②	0,16 ②	16
0207 White Pearl	15	57	28	0,39 ①	0,26 ②	13
0707 Pearl	12	37	51	0,43 ①	0,23 ②	10
0720 Pearl Linen	12	42	46	0,40 ①	0,21 ②	10
0210 White Sable	13	56	31	0,34 ②	0,18 ②	10
0102 Grey White	8	33	59	0,45 ①	0,25 ②	4
0101 Grey	7	20	73	0,50 ①	0,29 ②	4
0110 Grey Sable	6	24	70	0,48 ①	0,27 ②	3
3006 Charcoal Bronze	1	6	93	0,56 ①	0,30 ②	2
3030 Charcoal	2	5	93	0,56 ①	0,31 ②	2
3001 Charcoal Grey	1	9	90	0,54 ①	0,30 ②	1
<b>SV 3% - OF 3%</b>						
0220 White Linen	21	62	17	0,31 ②	0,15 ②	18
0202 White	18	70	12	0,28 ②	0,13 ③	17
0207 White Pearl	19	58	23	0,38 ①	0,26 ②	17
0720 Pearl Linen	16	40	44	0,41 ①	0,21 ②	14
0210 White Sable	16	57	27	0,34 ②	0,17 ②	13
0707 Pearl	13	37	50	0,44 ①	0,23 ②	11
0102 Grey White	10	30	60	0,47 ①	0,25 ②	7
0101 Grey	9	20	71	0,51 ①	0,28 ②	5
0110 Grey Sable	8	23	69	0,49 ①	0,28 ②	4
3001 Charcoal Grey	3	8	89	0,54 ①	0,31 ②	3
3006 Charcoal Bronze	2	6	92	0,55 ①	0,31 ②	2
3030 Charcoal	2	5	93	0,55 ①	0,32 ②	2

Colours	Thermal factors					Optical factors
	Fabric		Fabric + Glazing / gtot internal blind			Tv
	Ts	Rs	As	C : gv = 0,59	D : gv = 0,32	
<b>SV 5% - OF 5%</b>						
0202 White	24	65	11	0,30 ②	0,15 ②	23
0220 White Linen	23	58	19	0,34 ②	0,17 ②	21
0207 White Pearl	20	50	30	0,38 ①	0,19 ②	18
0720 Pearl Linen	20	39	41	0,42 ①	0,23 ②	17
0707 Pearl	17	34	49	0,44 ①	0,24 ②	15
0210 White Sable	19	50	31	0,38 ①	0,20 ②	15
0102 Grey White	14	35	51	0,45 ①	0,24 ②	11
0101 Grey	13	19	68	0,52 ①	0,28 ②	10
0110 Grey Sable	13	25	62	0,49 ①	0,28 ②	9
3001 Charcoal Grey	7	10	83	0,55 ①	0,30 ②	7
3006 Charcoal Bronze	7	6	87	0,56 ①	0,31 ②	7
3030 Charcoal	7	5	88	0,56 ①	0,31 ②	7
<b>SV 10% - OF 10%</b>						
0202 White	28	62	10	0,32 ②	0,16 ②	27
0220 White Linen	27	56	17	0,36 ①	0,18 ②	25
0207 White Pearl	25	50	25	0,38 ①	0,19 ②	22
0210 White Sable	24	49	27	0,39 ①	0,20 ②	21
0720 Pearl Linen	24	37	39	0,43 ①	0,23 ②	21
0707 Pearl	21	33	46	0,45 ①	0,24 ②	19
0102 Grey White	19	31	50	0,47 ①	0,25 ②	16
0110 Grey Sable	17	23	60	0,49 ①	0,27 ②	14
0101 Grey	17	18	65	0,52 ①	0,28 ②	14
3006 Charcoal Bronze	12	6	82	0,55 ①	0,32 ②	12
3001 Charcoal Grey	11	9	80	0,54 ①	0,31 ②	10
3030 Charcoal	10	5	85	0,56 ①	0,31 ②	10

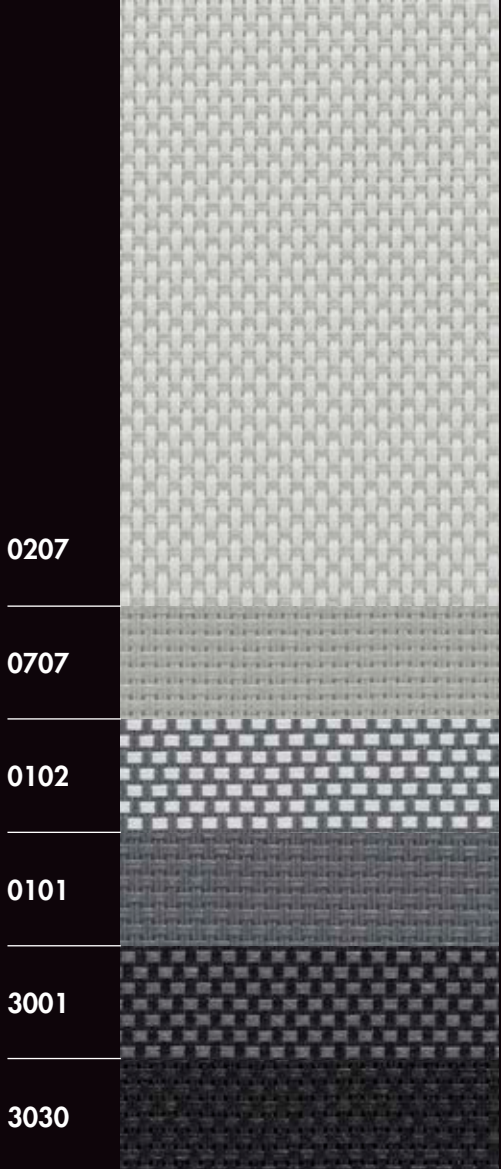
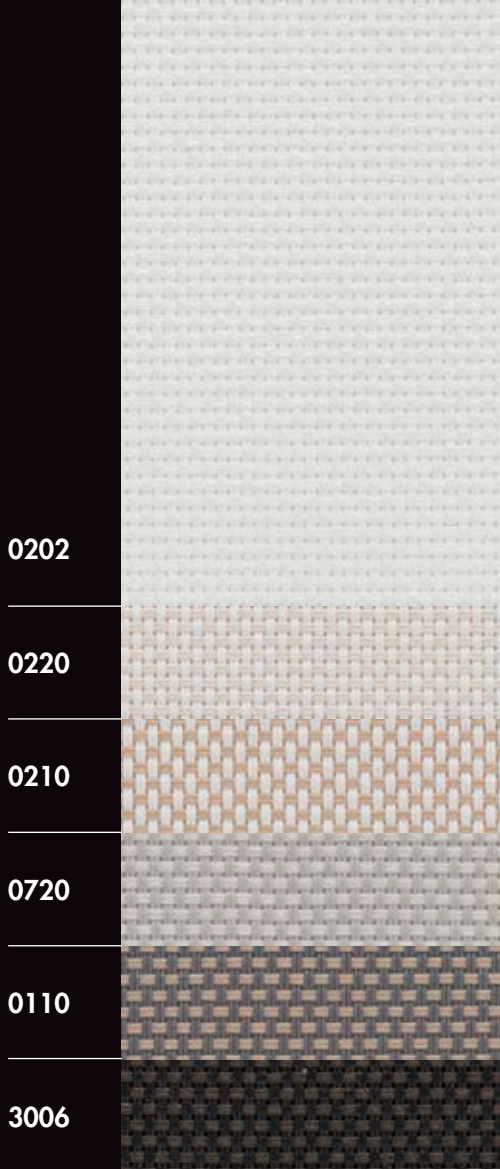
gv = 0,59: Solar factor of standard glazing (C), low-emission 4/16/4 double glazing filled with Argon (U value thermal transmittance = 1,2 W/m²K).

gv = 0,32: Solar factor of standard glazing (D), reflecting low-emission 4/16/4 double glazing filled with Argon (U value thermal transmittance = 1,1 W/m²K).

Comfort classification according to EN 14501 standard: ① very little effect ② little effect ③ moderate effect ④ good effect ⑤ very good effect

Samples tested according to EN 14500 standard defining the measurements and calculation methods as specified in the standard EN 13363-2 "Solar protection devices combined with glazing calculation of solar and light transmittance - part 2: EN 13363-2 detailed method" and EN 410 "Glass in building - Determination of luminous and solar characteristics of glazing".

WIDTHS: 200 - 250 - 320 CM



Colours may be slightly different from the actual ones

**SERVICE** 

- Calculation of solar factor g<sub>tot</sub> (glazing + blind)
- Spectral values and thermal & optical factors available on request
- Specification sheet
- A4 samples and prototypes
- Training on fabrics functionality

**SV 1%**  
**3001**

---



**SV 3%**  
**3001**

---



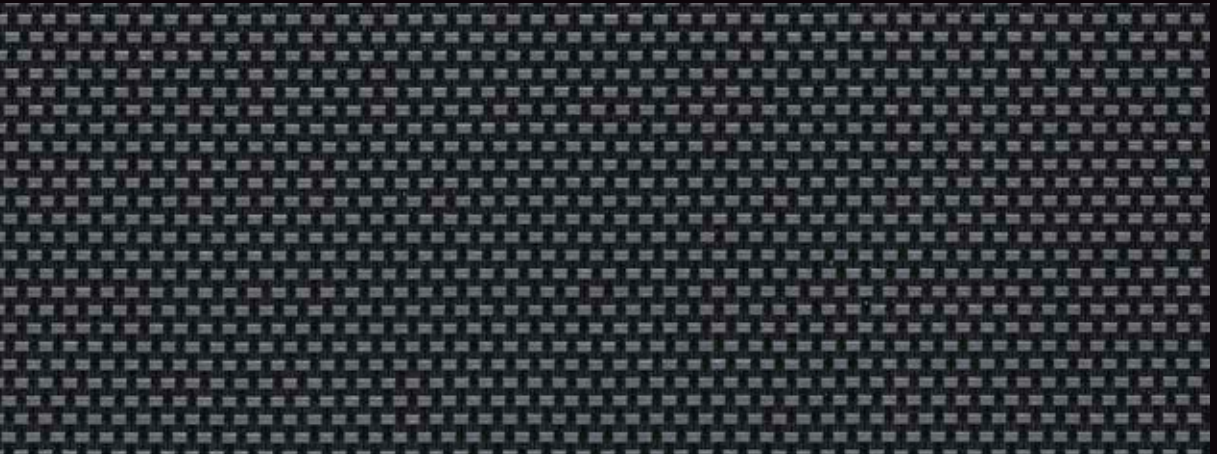
**SV 5%**  
**3001**

---

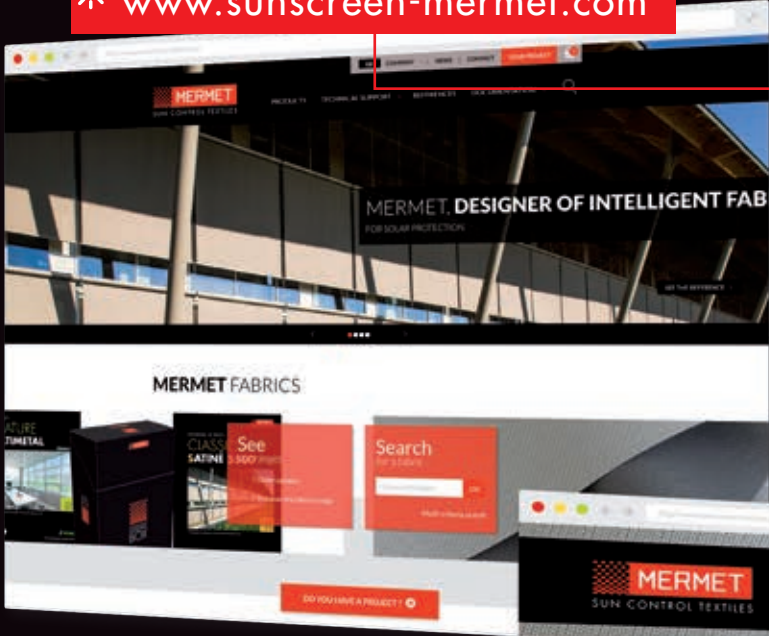


**SV 10%**  
**3001**

---

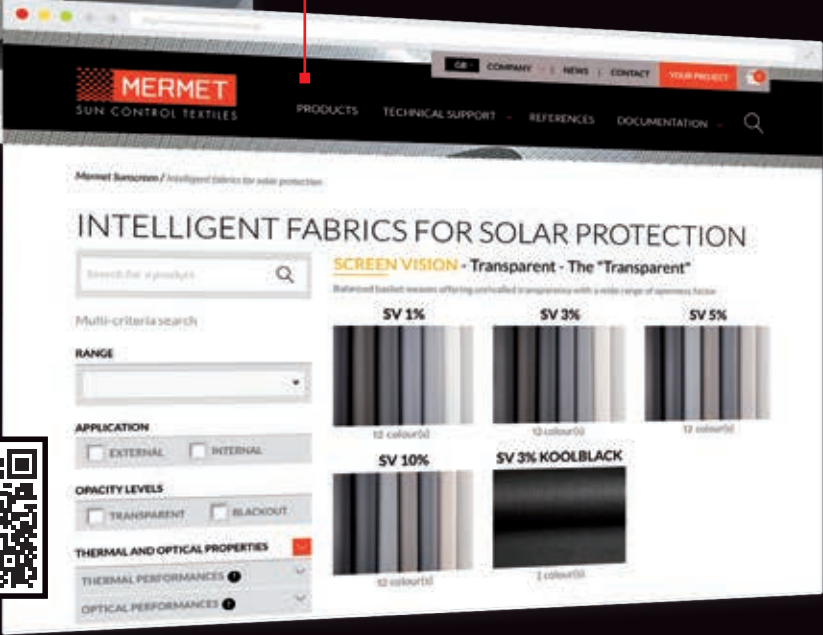


[www.sunscreen-mermet.com](http://www.sunscreen-mermet.com)



**FIND IN 3 CLICKS**  
**THE FABRIC BEST SUITED**  
to your project

- A search engine with performances criteria
- Many documents for download
- All products information available
- A library of references



Go directly to the products catalog >



**MERMET COLLECTION** offers a wide choice of fabrics for external and internal application, from transparency to total darkness, for thermal and optical comfort. To receive other brochures from the collection, **contact us**.



SCREEN VISION / DESIGN / THERMIC / LOW E      EXTERNAL SCREEN CLASSIC      SCREEN NATURE      BLACKOUT 100 %      ACOUSTICS



58, chemin du Mont Maurin - 38630 Les Avenières Veyrins-Thuellin - France  
Tel. +33(0) 474 336 615 - Fax +33(0) 474 339 729

This brochure must be read and interpreted in accordance with the General Terms & Conditions of Sale of MERMET SAS, with which it forms an indissoluble whole. The General Terms & Conditions of Sale that are current at any time are those contained on the MERMET SAS website at the following address: [www.sunscreen-mermet.com](http://www.sunscreen-mermet.com).